

Proposed Civil,Interior Furnishing, Electrical and AC works AT BARODA PRIDE, New No.41, Luz Church Road, Chennai - 600 004.		
Bill of Quantities		
Summary		
S. No.	Description	Amount in RS.
1	INTERIOR WORKS	
2	HVAC WORK	
3	PHE WORK	
4	ELECTRICAL WORK	
	GRAND TOTAL Rs.	

NOTE : GST EXTRA

**NOTE: All materials be used as eco-certified by GreenPro
(or) BIFMA (or) Green Guard Certified.**

Proposed Civil,Interior Furnishing, Electrical and AC works AT BARODA PRIDE, New No.41, Luz Church Road, Chennai - 600 004.

A.Civil Works

S.No	Description	Unit	Quantity	Rate		Amount in Rs	
				Supply	Erection	Supply	Erection
ROOF AND WALL INSULATION							
1	Supply & fixing of Double skin Built up system metal wall with insulation of overall 75 mm Thickness of the system consisting of profiled Supply of Zinalume Trimdek sheets shall be made of 0.45mm BMT (0.50mm TCT excluding paint), G550 (min 550 yield strength), 1015mm effective cover width with five major corrugation, 28mm high rib spaced at 203mm c/c with subtle square fluting in the pan and the end rib shall have anticapillary groove and return leg of Lysaght Trimdek. Top Sheet and Liner panel as Bare Zinalume Trimdek sheets shall be made of 0.42mm BMT (0.47mm TCT excluding paint), G550 (min 550 yield strength), 1015mm effective cover width with five major corrugation, 28mm high rib spaced at 203mm c/c with subtle square fluting in the pan and the end rib shall have anti-capillary groove and return leg of Lysaght Trimdek. metallic coated with Zinc-Aluminium alloy (i.e. 55% Al, 43.4% Zinc, 1.6% Si - Zinalume), AZ150 (min 150 gm/m2 total on both side) conforming to ASI397/ IS15961 class 3 for the durability of Tata BlueScope						
	Steel make with necessary SUB PURLIN arrangements.The sheet shall be Green pro, Griha, EPD certified and sheet shall have brand marking of the manufacturer giving product details on the back of the sheet at regular intervals confirming genuinity of the material.The insulation shall be 50 mm thick, 48 kg/m3 flexible or as per design requirement complying with IS 8183 BS - 3958 Part-5. ASTM C592-80. The insulation shall be supplied in the form of rollsThe bottom sheet shall be fixed directly to the purlin as liner sheet using galvanized imported self drilling and self tapping fasteners with EPDM washers. The steel sheet shall be fastened with 25 µm zinc-tin alloy coated, Hex head, self-drilling screw as per AS 3566 Class 3 fastener with EPDM washer as per the requirement considering the profile shape and design load. The fastener size shall be calculated as per the design or manufacturers recommendations. The profile sheet, fastener size etc. shall be approved by the concern authority. All the accessories like gutter/ flashing / capping shall be made from the same material (or manufacturer’s recommendation) which is used for main cladding application. The measurement shall be based on inished/covered surface area						
	For thermal, acoustic and fire safe over deck roof insulation, providing stone wool insulation roofing board of 175kg/m3 density, to be placed over the metal roofing sheet or concrete deck, to provide superior resistance to compression and point load. It shall consist long fine stone wool fibres spun from molten natural rock bonded with thermosetting resin & shall be available in slab form.						
	Insulation shall have thermal conductivity of 0.038 W/mK at 20°C mean temperature tested in accordance to ASTM C518.						
	It shall be a completely non-combustible insulation material of Class A1 as per EN 13501-1 with melting point of more than 1000°C as per ASTM E794-06.						
	The stone wool insulation shall have flame spread index 0 and smoke developed index 0 according to UL 723.						
	The insulation shall bear the approval mark by FM Approvals, Factory Mutual, under Class 1 insulated steel deck roof constructions, Class Number 4450 and or Class number 4470.						
	The insulation material shall be certified by EUCEB as non-carcinogenic, bio-soluble conforming to ASTM C 612-04						
	The insulation shall have a compression strength of more than 80kpa @ 10% deformation while tested as per EN 826.						
	The insulation shall resist point load of more than 700N @ 5mm deformation while tested as per EN 12430						
	The insulation shall have delamination strength of more than 7.5kPa while tested as per EN 1607.						
	The water absorption shall be less than 0.5kg/m² (partial immersion) as per E1609.97						
	The water vapor absorption shall be less than 1% by volume as per ASTM C 1104/C 1104M, chloride content not more than 10 ppm as per ASTM C795 and shot contents not more than 5% (on 250 micron and 500 micron sieve).						
	No CFCs, HCFs, HCFCs or asbestos shall be used in the manufacture of the insulation product, and have no perceptible odour shall be present when tested to ASTM C665-06.						
	The insulation shall not sustain fungus growth under normal conditions according to ASTM C1338-08.						

S.No	Description	Unit	Quantity	Rate		Amount in Rs	
				Supply	Erection	Supply	Erection
	The stone wool insulation shall be endorsed and approved by local green building council like Singapore Green Building Council for green building product certification.						
	75mm- U-Value of of 0.5 W/m2K	Sqm	24.55				
2	Supply & fixing of Double skin Built up system metal Roofing with insulation of overall 100mm Thickness of the system consisting of profiled Supply of Zinalume Trimdek sheets shall be made of 0.45mm BMT (0.50mm TCT excluding paint), G550 (min 550 yield strength), 1015mm effective cover width with five major corrugation, 28mm high rib spaced at 203mm c/c with subtle square fluting in the pan and the end rib shall have anticapillary groove and return leg of Lysaght Trimdek. Top Sheet and Liner panel as Bare Zinalume Trimdek sheets shall be made of 0.42mm BMT (0.47mm TCT excluding paint), G550 (min 550 yield strength), 1015mm effective cover width with five major corrugation, 28mm high rib spaced at 203mm c/c with subtle square fluting in the pan and the end rib shall have anti-capillary groove and return leg of Lysaght Trimdek. metallic coated with Zinc-Aluminium alloy (i.e. 55% Al, 43.4% Zinc, 1.6% Si - Zinalume), AZ150 (min 150 gm/m2 total on both side) conforming to AS1397/ IS15961 class 3 for the durability of Tata BlueScope Steel make with necessary SUB PURLIN arrangements						
	.The sheet shall be Green pro, Griha, EPD certified and sheet shall have brand marking of the manufacturer giving product details on the back of the sheet at regular intervals confirming genuinity of the material.The insulation shall be 50 mm thick, 48 kg/m3 flexible or as per design requirement complying with IS 8183 BS - 3958 Part-5. ASTM C592-80. The insulation shall be supplied in the form of rollsThe bottom sheet shall be fixed directly to the purlin as liner sheet using galvanized imported self drilling and self tapping fasteners with EPDM washers. The steel sheet shall be fastened with 25 µm zinc-tin alloy coated, Hex head, self-drilling screw as per AS 3566 Class 3 fasteners with EPDM washer as per the requirement considering the profile shape and design load. The fastener size shall be calculated as per the design or manufacturers recommendations. The profile sheet, fastener size etc. shall be approved by the concern authority. All the accessories like gutter/ flashing / capping shall be made from the same material (or manufacturer's recommendation) which is used for main cladding application. The measurement shall be based on finished/covered surface area.roof	Sqm	126.28				
	100mm- U-Value of of 0.38 W/m2K (2 layers of 50mm)						
3	Supply and Fixing of Slim Glass partition of 10mm Toughened Glass. The Profile shall be matt natural anodized, the Profile Manufacturer to supply all the necessary clips, seals and fixing accessories for the system.All Profiles to be with 2 mm Gauge thickness Excluding 20 Micron of Anodizing.	Sqm	11.26				
4	Supply & Fixing Frameless Glass Door (Double Leaf) with toughened glass and door accessories The Profile finish shall be as per Approved Architects specifications. Profile Manufacturer to supply all the necessary clips, seals and fixing accessories for the system. All Profiles to be with 1.5 mm Gauge thickness Excluding 20 Micron of Anodizing. Door size - 1800 x 2100mm .	Sqm	3.97				
5	Providing, fabricating and fixing Aluminium Powder Coated Fully Glazed door 12 gauge frame & styles confirming to BIS using sections / profile of specified size, shape and thickness with 20 micron anodizing including supplying and fixing necessary holding bolts / screws , fixtures and fastenings of anodized aluminum as per requirement and 12 mm thick toughened Glass shutter with special gasket felt – EPDM gasket and aluminum beading, filling the gaps around the frame with white colour gun grade silicon sealant to ensure the joint water tight, complete as per drawing etc including all hardware , lock, door close, hinges handles etc, complete as directed by The engineer. Door size: 0.90 x 2.10 m	Sqm	5.95				
6	Providing and fixing of 30 mm thick Flush shutter, with 6 mm ply finished with 1 mm thk laminate on both sides of the shutter and finishing with 3 horizontal grooves of 6 mm x 6 mm and wood door frames of size 90mm x 50mm. using necessary hardwares fittings Cost is inclusive of providing beech wood door frame with approved painted to desired color.	Sqm	3.64				
	Note :The project to go with GreenPro Certified building materials, products, and equipment. Materials include glazing, insulation, paints & coatings, adhesives & sealants, fly ash blocks, cement, concrete, composite wood, certified new wood, false ceiling materials, flooring materials, furniture, gypsum-based products, glass etc.,						

S.No	Description	Unit	Quantity	Rate		Amount in Rs	
				Supply	Erection	Supply	Erection
7	Masonry work using Autoclaved Aerated cement blocks of size 600 x150 x 200 mm in cement mortar 1:6 (one oc cement six of sand) for super structure in all floors including fixing frames of door and windows, proper setting curing etc., complete complying with standard specification as directed by the departmental officers.	Cum	13.59				
8	Prepare surfaces and plaster with CM 1:5 (1 cement: 5 fine sand) 20 mm thick (12mm+8mm) to all exterior faces of walls including RCC surfaces continuous to masonry in super structure and 12mm will be rough plastering includes water proofing chemical compound and 8mm will be sand paper finishing with double layer chicken mesh. The rates including curing, cost of materials, labour, equipments and machinery, all leads and lifts, loading and unloading, transportation and all other incidental charges etc, all as complete and directed by Engineer in charge.	Sqm	190.76				
9	Providing and applying weather proof Acrylic Emulsion Paint (for External painting) and approved shade including preparation of surface for painting, applying primer and two or more coats of paint as per manufacturer's specifications, scaffolding curing etc. complete as directed at all levels.	Sqm	190.76				
10	Providing and laying 10mm thick Anti skid ceramic tiles of approved make, shade and size and thickness in flooring over average 20 mm thick cement mortar 1:4 (1 part cement : 4 part coarse sand) bed laid to requisite, line, level and slope, fixed with cement slurry of honey like consistency, cleaning the joints with coir brush, filling the them with white cement or white cement mixed with requisite matching colour pigment, curing, cleaning the area with water or water with mild acid etc complete as directed. (Basic Cost -50rs/-/Sqft) Tile Size - 300mm x 300mm - in toilet	Sqm	1.61				
11	Dadoing walls with coloured Vitrified Glazed Wall Tiles of sizes 300mm X 600mm X 10mm size of approved make and quality and colour Set in cement mortar 1:2 (one cement ,two sand) over 10 mm base layer plastering and pointing with white cement neatly and including Corner beeding etc., complete as directed. (Basic Cost - 65Rs /- /sqft) - toilet wall.	Sqm	13.52				
12	Providing and fixing 18 mm thick Granite counter top to a minimum width of 600 mm and to a specified height constructed with BWP plywood. The rate shall include for providing storage unit below with openable shutters. The top, bottom and intermediate shelf having 19 mm thick water proof plywood and all surfaces shall be of laminated finish. The openable shutter shall be finished with laminate including hardware's like handles, hinges, ball catches etc.complete. Cost is inclusive of providing space for SS sink with drain board.	Rm	13.78				
13	Providing and fixing Ist quality Premium Vitrified tiles flooring 10mm thick of approved make, quality, colour and shade, 1200 mm x 600mm over and including a base mortar of 20mm thk, C.M 1:4 and same colour pointing in all respects including cleaning with acid etc. complete. (Basic Cost - 110Rs / Sft)	Sqm	107.10				
14	Providing, fabricating and fixing in position M.S. Structure made out of M.S. rolled/hollow (rounds/rectangular/ square etc.) sections as per architect's details including shearing /cutting, riveting, welding, grinding to smooth surface of all works, MS fixing holdfasts / anchor bolts to be grouted in concrete 1:2:4, providing and fixing nuts bots fasteners as required as per architect's details, including painting with two or more coats of first quality synthetic enamel paint of approved quality and make over a coat of primer etc. complete as directed. (MS standard section shall be measured and paid under relevant Item. Nuts, bolts, washers shall be deemed to have been included in the unit rates and nothing extra shall be paid for)	kg	6167				
15	Protection Screed: Horizontal Areas: Providing and Laying M25 grade screed concrete in 1:100 to a average thickness of 100 mm mixed with Integral Waterproofing admixture AquaArm Proof WP 10 at the dosage of 125 ml/bag of cement over waterproofing layer to a minimum thickness of 75 mm as per site requirement(Civil Contractor Scope) including control joints of 4M X 4M size and filling the panels with polyurethane sealant.	Sqm	118.28				
16	Plain cement concrete (1 cement: 4 M-sand : 8stone jelly) using 40mm and down gauge graded, hard blue granite stone aggregate, including required side shuttering, laid and well consolidated in foundation and basement etc., all as complete and directed by Engineer in charge.	Cum	11.83				
17	Chipping and Removing the existing damaged Tile flooring laid in cement mortar including stacking of serviceable material and disposal of unserviceable material out of site as per direction of Engineer-in-charge.	Sqm	118.28				
18	Demolishing Weathering course manually/ by mechanical means including stacking of steel bars and disposal of unserviceable material within 50 metres lead as per direction of Engineer - in- charge.	Cum	11.83				
19	Supply and fixing of Aluminium glass partition with glass 4mm thk including all necessary accessories and fittings etc.	Sqm	21.15				

S.No	Description	Unit	Quantity	Rate		Amount in Rs	
				Supply	Erection	Supply	Erection
20	Dismantling manually or by mechanical means all type of Stone / brick / block masonry in the building including plastered walls, parapet on terrace, compound wall etc. in existing sub structure and superstructure at all height and location. The contractor should take care that dismantling of structure should not cause any damage to the existing / adjacent structures near the building and even take care of dust control, noise control etc. Blasting is not permitted. All the work shall be carried out as instructed by Architect / BOB. The rate to include carting away unserviceable material / debris to a place approved by Municipal Corporation.	Cum	0.696				
21	RCC M25 -Providing and laying in position mechanically mixed Reinforced Cement Concrete (RCC) of 1:1:2 using 20 mm and downgrade metal at all levels upto plinth level for various RCC structural elements in any shape and design as per structural drawings and as directed including transporting (manually / mechanically), laying, compacting and finishing the surface in line, level and plumb as required including cost of curing etc. complete. The Rate to include necessary formwork,centring, shuttering, complete in all respects and execution of work at all heights and location with required lead and lifts complete as directed by Engineer in charge.	Cum	0.31				
22	Steel reinforcement for R.C.C. work including straightening, cutting, bending, placing in position and binding all complete	Kgs	157.50				
23	Supply, fabrication and Installation of roof ridge including accessories all complete	Rm	10.00				
24	Supply, fabrication and Installation of flashing in corners and edges wherever necessary including accessories all complete	Rm	41.16				
25	Supply, fabrication and Installation of rainwater gutter including accessories all complete	Rm	19.14				
26	Supply and Installation of rainwater downtake pipe including accessories all complete	Rm	3.5				
27	Supply & fixing of aluminium Louver including accessories all complete	Sqm	0.36				
28	Supply and fixing of Aluminium Top Hung windows of size 1500 x 600mm with glass 4mm thk including all necessary accessories and fittings etc.	Sqm	7.56				
	Sub Total (A) Rs.						-
B.HVAC Works							
AIR CONDITIONING EQUIPMENTS							
FOUR WAY CASSETTE AC (DX SYSTEMS)							
1	Supply of Four way Cassette type inverter AC,5 star with copper condenser coil and refrigerant(R32 or 410 A)indoor unit ceiling hung comprising cooling coil, evaporator fan with motor,filters,insulated drain pan ,drain pump,expansion valve,refrigerantfilter drier with codeless remote control unit,COP of 4.5 or above etc.outdoor unit comprising single phase hermetically sealed scroll / rotary compressors,condensor coil with fan & motor starters /controls / cutouts /relays etc.,mounted inside a powder coated sheet metal cabinet of 2mm thick duly treated for corrosion protection complete, mounted on ribbed rubber pads.						
a.	2TR Inverter Cassette AC	Nos	3				
b.	1.5TR Inverter Cassette AC	Nos	1				
2	TREATED FRESH AIR UNIT: (DX TYPE) Supply ,Installation,Testing and Commissioning of Treated Fresh Air Unit suitable for Ducting.						
a.	Capacity of 3.5 TR Treated Fresh Air unit (Static pressure: 80 Pa)	Nos	1				
	Sub Total B1 Rs.						-
DOWNSTREAM ITEMS - REFRIGERATION PIPE							
INSTALLATION CHARGES:							
3	INDOOR UNITS: Installation, Testing and Commissioning of above AC including shifting, lifting to the required floors, fixing of IDUs in the respective floors, first fill of refrigerent gas, necessary civil work, etc. The work shall be carried out in all aspects as required by the Bank.						
a.	2TR	Nos	3.00				
b.	1.5TR	Nos	1.00				

S.No	Description	Unit	Quantity	Rate		Amount in Rs	
				Supply	Erection	Supply	Erection
4	REFRIGERATION PIPE: Supply and fixing of necessary approved sizes of Suction and liquid line pair refrigerant pipe made out of copper including accessories, jointing/brazing etc duly insulated with nitrile tubular rubber sections to prevent condensation with suitable adjustable ring type hanger supports etc. complete as required (The correct size of pipe has to be worked out by the vendor and the number of circuits shall match the vendors equipment). Vendor should Use only Long Bend to Avoid Pressure drop. Mode of measurement - Single length of measurement only (Rm) consider for both suction and liquid line. Copper Pipe should be Paired with the OEM standard and approved by the Consultant / Bank. The workmanship for the piping shall be carried out as per the recommended practice of the OEM. The piping to be vacuum tested and leak tested. Scope includes the rate shall include all necessary cost towards, supports, hardwares, necessary civil work, etc. The work shall be carried out in all aspects as required by the Bank. (1Mtr of refrigerant piping = 1 Mtr of delivery line + 1 Mtr of return line). In case, of two circuits, the length shall be measured individually for each circuit.	Rmt	50				
5	Drain Pipe: Supply & laying of suitable size drain pipes 32 mm with 9mm thick nitrile insulation from IDU to nearest drain point as decided by the Bank. The rate shall include all necessary cost towards, supports, hardwares, necessary civil work, etc. The work shall be carried out in all aspects as required by the Bank.	Rmt	40				
6	Control Cable: Supply and laying of suitable size Control cable from IDU's and ODU's as per manufacturer's specification (suitable for the above AC). The cable has to be PVC insulated FRLS copper cable laid in suitable PVC conduit. The rate shall include all necessary cost towards, supports, hardwares, etc. All the materials have to be as per latest IS standards. Complete the work in all aspects as required by the Bank.	Rmt	50				
7	Power Cable: Supply and laying of suitable size Power cable from IDU's and ODU's as per manufacturer's specification (suitable for the above AC). The cable has to be PVC insulated FRLS copper cable laid in suitable PVC conduit. The rate shall include all necessary cost towards, supports, hardwares, etc. All the materials have to be as per latest IS standards. Complete the work in all aspects as required by the Bank.	Rmt	50				
8	Brackets & Angles frames for mounting Outdoor UNIT: Fabrication of MS Steel angle frame structure for mounting the outdoor units. The size of the angle shall be min.40mm x 40mm x 6mm or more as recommended by the OEM. the rate shall include all accessories, hardwares, all related civil / welding works, anti-corrosion coating, painting, etc. complete as per the requirement at site for safely mounting the outdoor unit on the wall / floor. the work shall be carried out in all aspects as required by the bank & OEM	Kgs	90				
	NOTES : a) The contractors shall use only the specified materials as mentioned above and shall submit the list along with the drawings before starting the work at site. b) All the materials shall be as per the latest IS standards. c) In case of non-availability of any material, approval of the Bank's Engineer must be obtained before using any other material and the approval is subject to adjustment of the cost of the material. d) Before placing order, the contractor must submit a letter from OEM stating the specifications of their air-conditioner and dimensions of pipes & cables recommended for their AC. e) Before placing order, the contractor must submit the sample of the materials to be used and obtain prior approval from the Bank. f) Rate should be inclusive of all necessary Civil works related to the AC installations including core cutting, scaffolding, closing the pipe passage on the external & internal wall, etc. should be inclusive of all items at all levels. g) The above works should be coordinated and executed along with Interior / Civil / Electrical contractors for timely completion.						
	Sub Total B2 Rs						-
	Sub Total [B - B1+B2] Rs.						-

S.No	Description	Unit	Quantity	Rate		Amount in Rs	
				Supply	Erection	Supply	Erection
C PHE Works							
SANITARY INSTALLATIONS							
1	Supplying, fixing, testing and commissioning of approved make white colour European wall mounted with Metropole Flush valve The quoted price shall also include installation of plastic solid seat cover with rubber buffers and flap, Heavy duty plastic hinges etc. and all accessories as per the recommendation of manufacturer,complete. Flush Valve of 32mm dia Size (concealed body) with exposed shut off provision Flow rate of Flush valve to be 4 LPF for Full Flush & 2 LPF for Half Flush as per IGBC requirement	Nos.	1				
2	Supplying, installing, testing and commissioning approved make pedestal Wash basin white colour with CI brackets, 32mm dia CP waste coupling, 32mm dia C.P.bottle trap with C.P. extension pipe, 1 No.15mm dia C.P. angle cock 1 No. C.P. flexible inlet connection pipe G.I. expansion bolts etc., complete including silicon sealant.	Nos.	2				
3	Supplying, Installing, testing and commissioning of approved make stainless steel kitchen sink without drain board, CP waste coupling, 40mm dia flexible pipe, 1 no. 15mm dia sink cock table/wall mounted type with swinging spout, C.I.brackets etc.,complete. Flow rate of Faucet to be 3.0 LPM as per IGBC requirement	Nos.	1				
4	Supplying & fixing of approved make 15mm CP health faucet with one no. of CP angle cock, CP flexible tube 1.0m long, CP crutch, nozzle etc., complete. Flow rate of Faucet to be 3.0 LPM as per IGBC requirement.	Nos.	1				
5	Supplying & fixing of approved make 15mm CP two way bib cock with necessary CP wall flanges etc., complete. Flow rate of Faucet to be 2.5 LPM as per IGBC requirement.	Nos.	1				
6	Supplying and fixing approved make stainless steel paper holder with necessary fixing material paper roll etc.complete.	Nos.	1				
7	Supplying and fixing approved make C.P. Robe hook with C.P. screws etc., complete. Fixed on the toilet door	Nos.	1				
8	Supplying & fixing of approved make pillar cock for wash basin with necessary CP wall flanges etc., complete.	Nos.	2				
9	Supplying and fixing approved make C.P. towel ring with necessary fixing materials	Nos.	1				
10	Supplying and fixing approved make liquid soap dispenser with necessary fixing materials etc.	Nos.	1				
11	Supplying and fixing approved make Stainless Steel Tissue paper dispenser with necessary fixing materials etc.	Nos.	1				
12	Supplying and fixing approved make electrically operated automatic stainless steel hand drier with necessary fixing materials etc	Nos.	1				
13	Supplying & fixing of approved make bib cock with necessary fittings. Flow rate of Faucet to be 2.5 LPM as per IGBC requirement.	Nos.	1				
14	Supplying and fixing approved make mirror of size 800x600mm with necessary fixing screws etc complete.	Nos.	2				
INTERNAL SOIL & WASTE SYSTEM:							
15	Supplying, laying, jointing, testing and commissioning approved make UPVC pipes class III 6 Kg/cm2 with solvent cement joints conforming to IS 4985 for Wash basin, Washing machine & Sink outlets. The quoted rate shall include necessary chisling in walls making good the same in C.M. 1:4, encasing the pipes in toilet sunken and under ground in M-15 as per specifications 100 mm thk. all around with necessary shuttering arrangement, necessary fittings viz.,elbows,tees etc.complete.						
a	40 mm dia	Rmt	5				
b	50 mm dia	Rmt	5				
c	63 mm dia	Rmt	QRO				
16	Supplying, laying, jointing, testing and commissioning approved make UPVC pipes SWR grade conforming to IS 13592 Class B with rubber ring joints conforming to IS 5382. The quoted rate shall include necessary fittings like Tees, Bends, Offsets etc., Including bore holes in walls complete.						
a	75 mm dia (6 Kg/cm2)	Rmt	15				
b	110 mm dia (6 Kg/cm2)	Rmt	8				
17	Supplying, laying, jointing, testing and comissioning of approved make PVC floor drain with C P grating with required concrete encasing all around, complete.	Nos.	3				
18	Supplying, fixing and testing PVC Multi floor trap (heavy duty hinged type) with brass CP frame & cover (150 mm x 150 mm square / 125 mm round). Trap of 100 mm dia. Inlet and 75 mm dia outlet fixed on a bed of cement concrete etc., complete.	Nos.	2				

S.No	Description	Unit	Quantity	Rate		Amount in Rs		
				Supply	Erection	Supply	Erection	
INTERNAL WATER SUPPLY SYSTEM:								
19	Supplying, installing, fixing, jointing, testing and commissioning of approved make Chlorinated Polyvinyl Chloride pipes (CPVC) SDR.11, ASTM CTS, ASTM IPS. The fittings and specials such as tees, elbows, couplers, bends, enlargers etc., with CPVC brass threaded combination / transition specials such as male adapters brass threaded female adapters, brass FPT Tee, Brass FPT elbow etc., where connection with metal is to be made including necessary drilling holes, chasing walls and making the same good in geru mixed cement mortar 1:1 restore the same original condition neatly as directed by the Engineer incharge. The quoted rate shall include pressure testing (Once at the time of fixing the concealed pipes and once pre tiling). Joints to be made with CPVC solvent cement up to 50mm dia as per ASTM D2846 and above 50mm dia primer P70, and solvent confirming to ASTM F4931 / 724.(Cold, Hot & RO water supply)							
a)	20 mm dia	Rmt	20					
b)	25 mm dia	Rmt	10					
e)	50 mm dia	Rmt	5					
20	Supplying, installing, testing and commissioning of approved make full way lever operated forged brass ball valve of brass body with forged brass hard chromeplated steel ball tested to a pressure not less than 20 Kg / sqcm with threaded joints complete.							
a)	20 mm dia	Nos.	2					
b)	25 mm dia	Nos.	1					
Sub Total [C] Rs.							-	

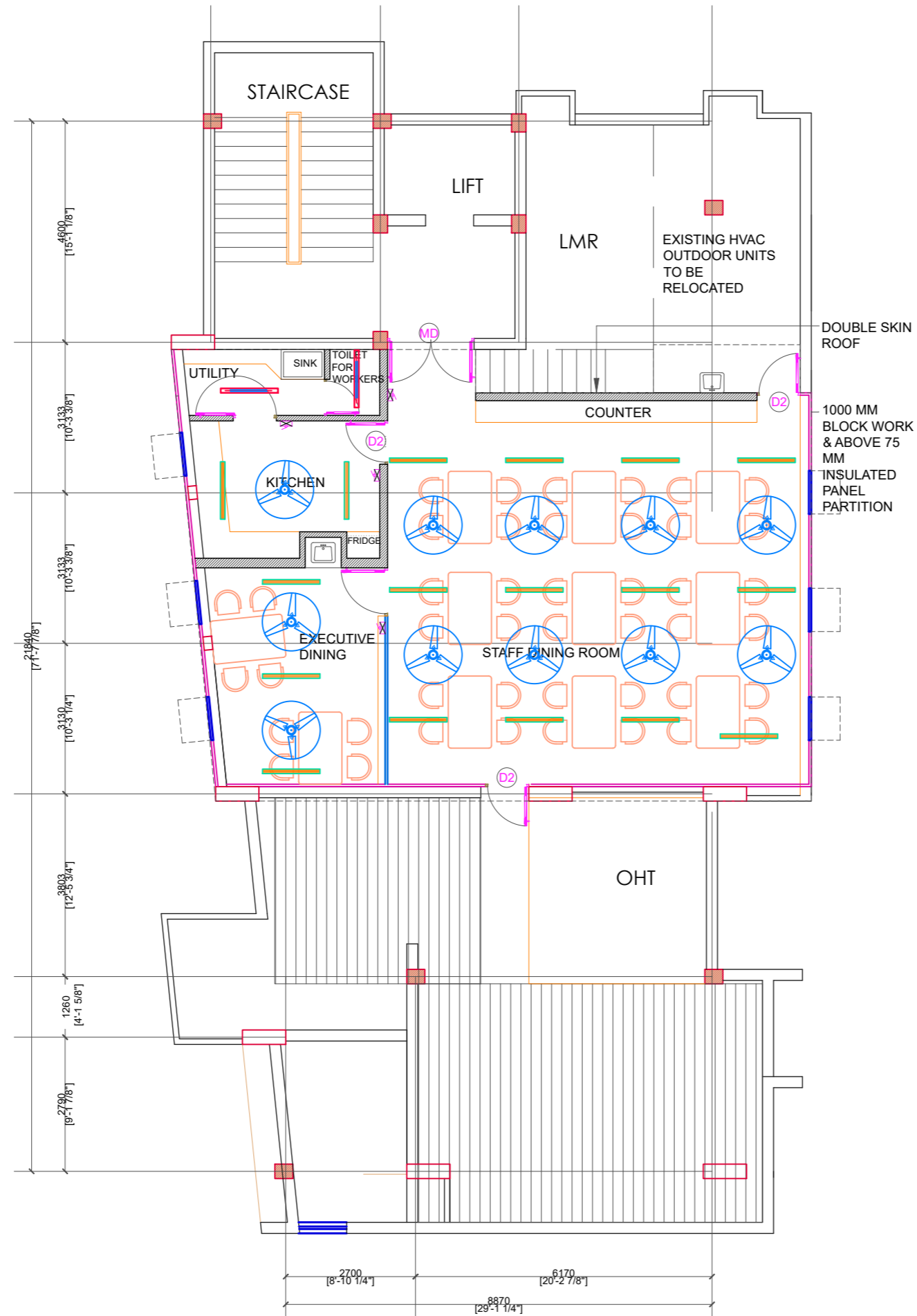
D.Electrical Works

LIGHT & POWER POINT WIRING							
1.0	PRIMARY LIGHT POINT						
	Wiring for Primary/Single control Light Point with 2 x 1.5 sq. mm. + 1 x 1.5 (E) sq. mm. ZH-FRLS PVC insulated Multi Stranded copper wire laid Partly in surface with 1.6mm thick MS Conduit or 2mm thick FRLS PVC conduit in concealed in wall, including providing and fixing Galvanised / Cadmium plated MS box, 6A Single Way modular Switch, modular plate in recess/surface and making necessary connections etc. complete as per specification.	Pts	9			-	-
2.0	SECONDARY LIGHT POINT						
	Wiring for additional / secondary light points without switch, switch box & modular plate (Group Controlled by switch or MCB in MCBDB light Point) with 2 x 1.5 sq. mm. + 1 x 1.5 (E) sq. mm. ZH-FRLS PVC insulated MultiStranded copper conductor wire in MS Conduit laid in surface with necessary accessories etc.	Pts	10			-	-
3.0	CEILING FAN POINT						
	Wiring for Ceiling Fan Point with 2 x 1.5 sq. mm. + 1 x 1.5 (E) sq. mm. ZH-FRLS PVC insulated Multi Stranded copper wire laid Partly in surface with 1.6mm thick MS Conduit or 2mm thick FRLS PVC conduit in concealed including providing and fixing Galvanised / Cadmium plated MS box, 6A Single Way modular Switch, 300W modular electronic regulator, modular plate in recess, with fan hook box in concealed and making necessary connections etc. complete as per specification.	Pts	11			-	-
4.0	EXHAUST FAN POINT						
	Wiring for Exhaust Fan Point with 2 x 1.5 sq. mm. + 1 x 1.5 (E) sq. mm. ZH-FRLS PVC insulated Multi Stranded copper wire laid Partly in surface with 1.6mm thick MS Conduit or 2mm thick FRLS PVC conduit in concealed including providing and fixing Galvanised / Cadmium plated MS box, 6A Single Way modular Switch, modular plate in recess, Ceiling Rose near exhaust fan, wiring from ceiling rose to exhaust fan with FRLS PVC Insulated and PVC sheathed 3 core 1.5 sqmm stranded lexible cable and making necessary connections etc. complete as per specification.	Pts	2			-	-
5.0	1x6A INDEPENDENT SOCKET POINTS						
	Supply and fixing of independent 6A 5pin socket outlets point with 3 x 1.5 Sqmm ZH-FRLS PVC insulated Multi Stranded copper wire laid Partly in surface with 1.6mm thick MS Conduit or 2mm thick FRLS PVC conduit in concealed including providing and fixing Galvanised/cadmium plated MS box (6module), 1No 6A Switch with 1No 5 pin modular socket outlet, modular plate in recess and making necessary connections etc.	Pts	8			-	-
6.0	6A DEPENDENT SOCKET POINTS						
	Supply and fixing of dependent 6A 5pin socket outlets point with 3 x 1.5 Sqmm ZH-FRLS PVC insulated Multi Stranded copper wire in existing switch box with 1No 6A Switch with 1No 5 pin modular socket outlet including necessary accessories & connections etc.	Pts	2			-	-

S.No	Description	Unit	Quantity	Rate		Amount in Rs	
				Supply	Erection	Supply	Erection
7.0	16A & 6A SOCKET POINT WIRING WITH CONDUITS						
7.1	Wiring for 16A 1phase socket outlets point with 3 x 2.5 Sqmm ZH-FRLS PVC insulated Multi Stranded copper wire laid Partly in surface with 1.6mm thick MS Conduit or 2mm thick FRLS PVC conduit in concealed with necessary accessories etc.	Mtrs.	100			-	-
7.2	Wiring for 6A 1phase socket outlets point with 3 x 1.5 Sqmm ZH-FRLS PVC insulated Multi Stranded copper wire laid Partly in surface with 1.6mm thick MS Conduit or 2mm thick FRLS PVC conduit in concealed with necessary accessories etc.(for IDU AC)	Mtrs.	50			-	-
8.0	16A & 6A SOCKET OUTLET						
8.1	Supply and fixing of 16A 1phase Switch & 5 pin socket with front plate and MS boxes with necessary accessories etc.,	Nos.	6			-	-
8.2	Supply and fixing of 6A 1phase Switch & 5 pin socket with front plate and MS boxes with necessary accessories etc.,(for AC IDU)	Nos.	2			-	-
9.0	AC POINT WIRING						
9.1	Wiring for AC point with 2 x 4 sq. mm. along with 1 x 4.0 sq. mm (E). FRLS PVC insulated multistranded copper wire in already laid conduit.	Rmt	200			-	-
10.0	AC POINT (SWITCH & SOCKET)						
10.1	Supply and fixing of suitable Galvanised / Cadmium plated 2module MS box with modular plate with 25A DP switch with indicator etc.,	Nos.	5			-	-
10.2	Supply and fixing of suitable Galvanised / Cadmium plated 2module MS box with modular plate with 25A 3pin socket etc.,	Nos.	5			-	-
11.0	MAIN/SUBMAIN WIRING						
11.1	Wiring for circuit/ submain wiring alongwith earth wire with the following sizes of ZH-FRLS PVC insulated Multistranded copper wire in already laid MS/PVC Conduit						
a	2 X 1.5 sq. mm + 1 X 1.5 sq. mm earth wire	Rmt	60			-	-
b	2 X 2.5 sq. mm + 1 X 2.5 sq. mm earth wire	Rmt	40			-	-
c	2 X 4.0 sq. mm + 1 X 4.0 sq. mm earth wire	Rmt	35			-	-
11.2	Supplying and fixing in surface 1.6mm thick ERW MS Conduit of the following sizes.						
a	20 mm dia	Rmt	20			-	-
b	25 mm dia	Rmt	20			-	-
c	32 mm dia	Rmt	10			-	-
11.3	Supplying and fixing in Recess 2.0mm thick FRLS PVC Conduit of the following sizes.						
a	20 mm dia	Rmt	20			-	-
b	25 mm dia	Rmt	10			-	-
c	32 mm dia	Rmt	10			-	-
11.4	Supplying and fixing in surface ERW MS Flexible hose of the following sizes.						
a	25 mm dia	Rmt	5			-	-
b	32 mm dia	Rmt	5			-	-
11.5	Supplying and fixing in Recess /surface PVC flexible hose of the following sizes.						
a	20 mm dia	Rmt	5			-	-
b	25 mm dia	Rmt	5			-	-
c	32 mm dia	Rmt	5			-	-
	LIGHT FIXTURES						
12.0	Supply,Installation,Testing and Commissioning of following wattage LED down lighter Recessed / Surface mounting made of diecast aluminium body with powder coating, with Driver, operating voltage range of 150 to 265 Volts AC, Power factor > 0.9 high power 6 Nos of 1 W LED 1 watt having efficacy of > 120 lumens/watt etc., complete with 3 years warranty.						
a	1X20Watt LED Batten type fitting	Each	6			-	-
b	1X9 Watt LED Mirror fitting	Each	1			-	-
	1x25W LED Suspended type linear type fitting with suitable necessary fixing accessories.	Each	15			-	-
	LT CABLES & CABLE TRAY						
13.0	SUPPLYING & LAYING CABLE						
	Supply,laying ,testing and commissioning of following sizes of XLPE Insulated, cores laid up, PVC tape/Extruded Inner sheathed,galvanised steel strip armoured, Extruded PVC Type ST2 Sheathed, Aluminium / Copper conductor 1.1 kv grade cable as per IS 7098(Part 1) 1988 on wall/ceiling/ cable tray / masonry duct/pipes with suitable MS Clamps wherever required as per specification.						
a	4 Core 16 sq.mm XLPE,Al.Ar	Rmt	50			-	-

S.No	Description	Unit	Quantity	Rate		Amount in Rs	
				Supply	Erection	Supply	Erection
14.0	END TERMINATION						
	Supplying and making end termination with double compression gland and aluminium/copper lugs for following size of PVC insulated and PVC sheathed / XLPE aluminium/copper conductor cable of 1.1 KV grade as required.						
a	4 Core 16 sq.mm XLPE,Al.Ar	Nos	4			-	-
	DISTRIBUTION BOARDS						
15.0	TPN MCB DISTRIBUTION BOARDS						
	Supplying and fixing following way prewired MCB distribution board of steel sheet on surface/ recess mounted complete with loose wire box, terminal connectors for all incoming and outgoing circuits, duly prewired with suitable size FRLS PVC insulated copper conductor up to terminal blocks, tinned copper bus bar, neutral link, earth bar, din bar, detachable gland plate, interconnections, powder painted including earthing etc. as required. IP-43 with metal door						
a	Terrace LDB Incomer 40 A TPN MCB Sub incomer 3Nos of 25A DP RCCB 30mA Out Goings 18 Nos 6A SP MCBs	Each	1				
b	Terrace PDB Incomer 63 A TPN MCB Sub incomer 3Nos of 40A DP RCCB 30mA Out Goings 12 Nos 16A SP MCBs	Each	1				
	Earthing						
16.0	Body Earthing with 40mm Dia 3 metre long, GI pipe including all accessories, and providing brick masonry work and enclosures with RCC slab and watering pipe etc. with Earth enhancing compound including excavation, refilling etc as required.	Each	2			-	-
17.0	Providing and fixing following sizes of GI / copper Flat / wire on surface or in recess for connections etc. as required.						
a	25 x 3 mm GI Flat	Rmt	10			-	-
b	8 SWG GI Wire	Rmt	10			-	-

S.No	Description	Unit	Quantity	Rate		Amount in Rs	
				Supply	Erection	Supply	Erection
	LOW CURRENT WIRING						
18	Supply & Drawing high density polyethelene insulated, solid annealed high conductivity 0.5 mm dia bare copper , following pair , polyester taped and sheathed with high oxygen index Fire Retardent PVC compound , generally conforming to ITD specifications in existing recessed PVC conduit making connections etc as required.						
a	2 Pair	Rmt	20			-	-
19	TELEPHONE SOCKET						
a	Supply and fixing of RJ 11 Telephone socket with front plate and back boxes with necessary accessories etc.,	Nos	1			-	-
20	RG 6 TV COAXIAL CABLE & SOCKET						
a	Supply & Laying of RG 6 TV foam insulated copper conductor double screened with aluminium foil and aluminium alloy braiding Coaxial Cable in the existing PVC conduit complete as required	Rmt	20			-	-
b	Supply and fixing of Co-axial TV socket with front plate and back boxes with necessary accessories etc.,	Nos	1			-	-
21	CAT 6 CABLE & SOCKET						
a	Supply & Laying of CAT 6 cable in the already laid PVC conduit complete as required	Rmt	30			-	-
b	Supply and fixing of CAT6 socket with front plate and back boxes with all necessary accessories including.	Nos	2			-	-
22	SUPPLYING AND FIXING OF FRLS PVC CONDUIT						
	Supplying and fixing of following sizes of ISI FRLS PVC conduit along with the accessories in recess including cutting the wall and making good the same in case of recessed conduit as required:						
a	20mm DIA 2mm thick FRLS PVC CONDUITS	Rmt	50			-	-
b	25mm DIA 2mm thick FRLS PVC CONDUITS	Rmt	50			-	-
	MISCELLANEOUS WORKS						
23.0	Removing of existing Light fixtures,conduits,wires,switches,sockets and boxes etc.,	LS	1				-
	Sub Total [D] Rs.					-	-
	Total (E = A+B+C+D) Rs.						-



TERRACE FLOOR

NOTES

1. This drawing is sole property of 'Pithavadian and Partners' and must not be reproduced or altered either in full or in part by anyone without consent from us or be passed to any individual or company not authorised by us.
2. Any discrepancy in the drawing should be brought to the immediate attention of the Architect.
3. All dimensions in millimeters and levels in meters.
4. Dimensions to be followed as indicated and not to be scaled.

TERRACE FLOOR:

SYMBOL	DESCRIPTION
	CEILING FAN
	4FT 25W LED LINEAR SUSPENDED TYPE FITTING
	4FT 20W LED BATTEN TYPE FITTING
	SWITCH BOX

REV.	DATE	DESCRIPTION	DRAWN	CHKD.
REVISIONS				
AS BUILT				
CONSTRUCTION				
APPROVAL				
INFORMATION				
TENDER	*			
SCHEME				
ISSUED FOR				

NAME OF THE PROJECT:
BANK OF BARODA
MYLAPORE BRANCH

CLIENT:
BANK OF BARODA
MYLAPORE

DRAWING TITLE:
BANK OF BARODA
TERRACE FLOOR LIGHTING LAYOUT

STRUCTURAL CONSULTANT:
ZACHARIA GEORGE F.I.E

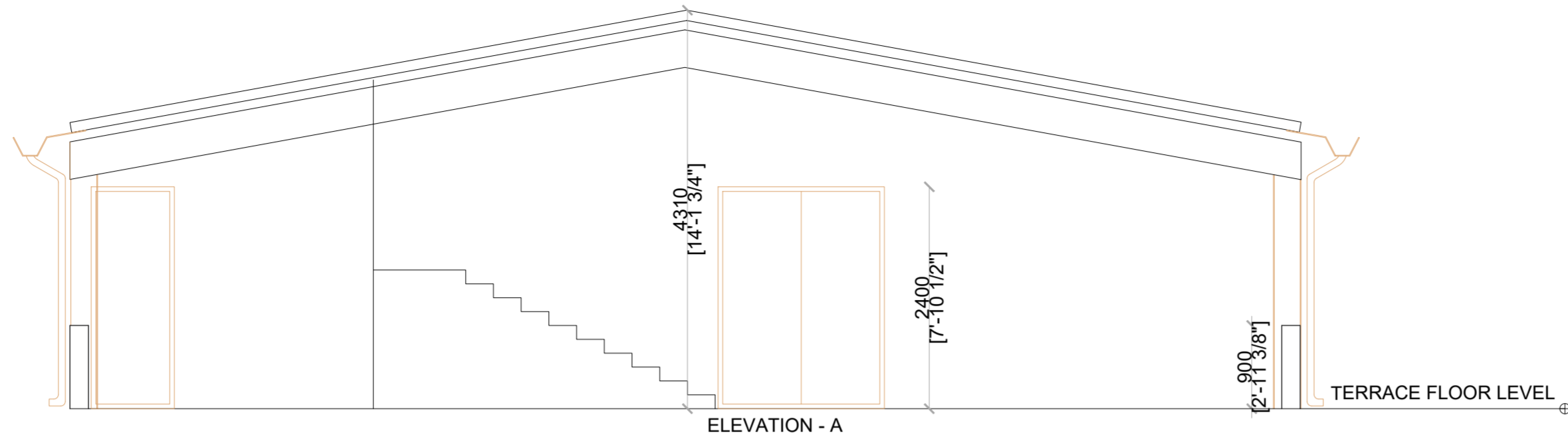
SCALE: 1:100 @ A3	DESIGN BY: SG	DRAWN BY: SRK	CHECKED BY: SG
DATE: 03.03.2025	SIGN:	SIGN:	SIGN:

ARCHITECTURE * INTERIORS * PLANNING * ENGINEERING * MANAGEMENT

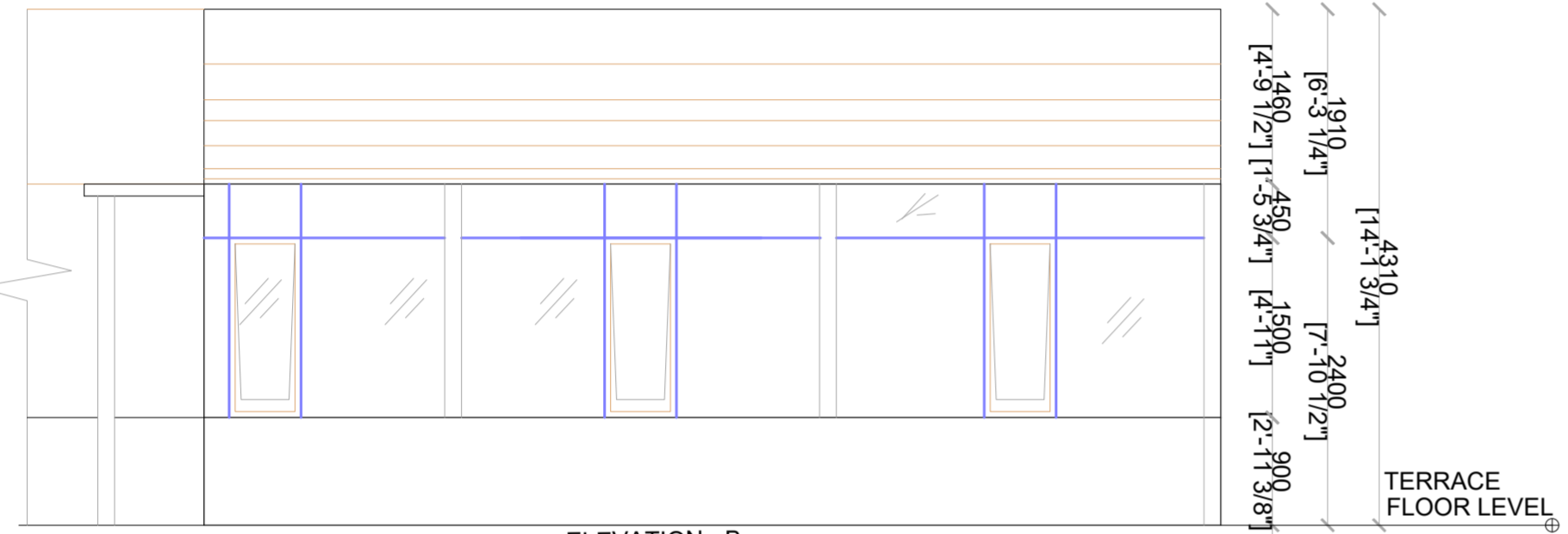
PITHAVADIAN AND PARTNERS
Chennai • Bengaluru • Kochi • Hyderabad

10, MURUGAPPA ROAD, NAWAB GARDENS,
KOTTURPURAM, CHENNAI - 600 085

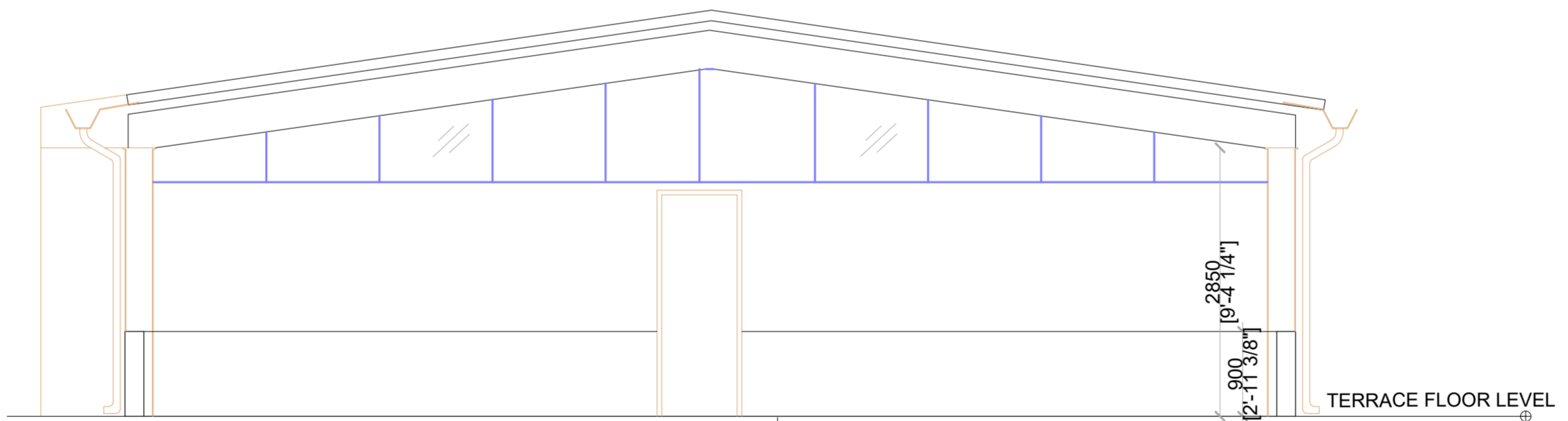
Phone : +91 (0) 44 2447 0033 / 44 / 66
Fax : +91 (0) 44 2447 0888 / 4213 2797
email : mail@paparchitect.com
website : www.paparchitect.com



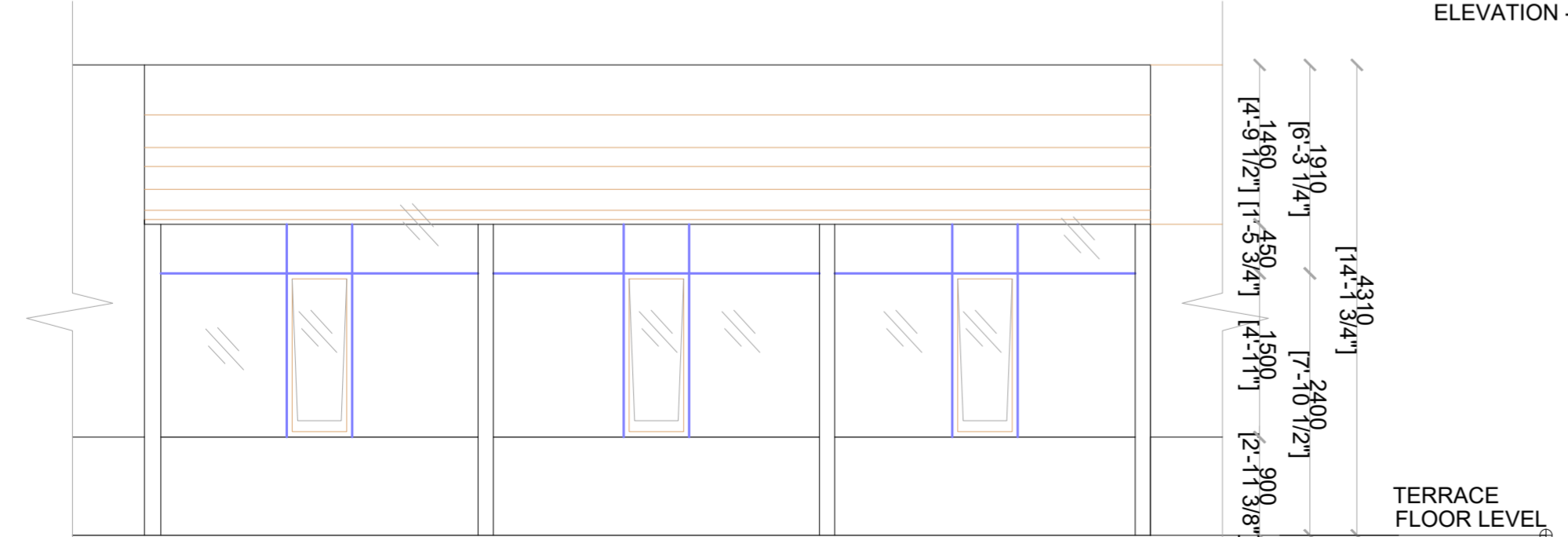
ELEVATION - A



ELEVATION - B



ELEVATION - C



ELEVATION - D

NOTES

1. This drawing is sole property of 'Pithavadian and Partners' and must not be reproduced or altered either in full or in part by anyone without consent from us or be passed to any individual or company not authorised by us.
2. Any discrepancy in the drawing should be brought to the immediate attention of the Architect.
3. All dimensions in millimeters and levels in meters.
4. Dimensions to be followed as indicated and not to be scaled.

REVISIONS

AS BUILT	
CONSTRUCTION	
APPROVAL	
INFORMATION	
TENDER	*
SCHEME	
ISSUED FOR	

TENDER

NAME OF THE PROJECT:
PROPOSED INTERIORS FOR BANK OF BARODA
MYLAPORE REGIONAL OFFICE

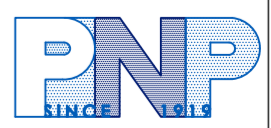
CLIENT:
BANK OF BARODA
MYLAPORE

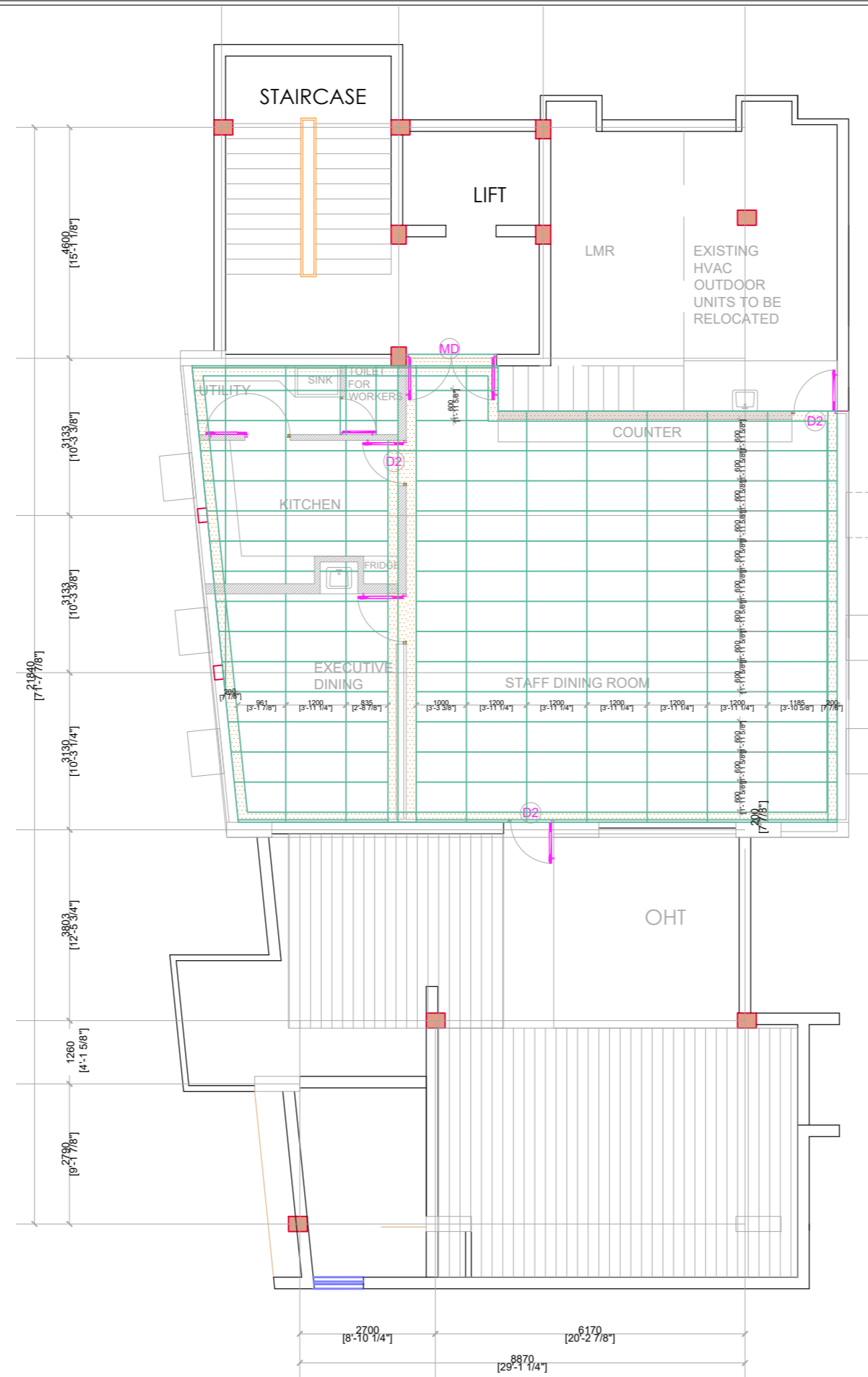
DRAWING TITLE:
BANK OF BARODA
TERRACE FLOOR - ELEVATIONS
STRUCTURAL CONSULTANT:
ZACHARIA GEORGE F.I.E

SCALE: 1:50 @ A2	DESIGN BY: PDG	DRAWN BY: RUTVI	CHECKED BY: PDG
DATE: 11.03.2025	SIGN:	SIGN:	SIGN:

ARCHITECTURE * INTERIORS * PLANNING * ENGINEERING * MANAGEMENT

PITHAVADIAN AND PARTNERS
Chennai • Bengaluru • Kochi • Hyderabad
10, MURUGAPPA ROAD, NAWAB GARDENS,
KOTTURPURAM, CHENNAI - 600 085
Phone : +91 (0) 44 2447 0033 / 44 / 66
Fax : +91 (0) 44 2447 0888 / 4213 2797
email : mail@paparchitect.com
website : www.paparchitect.com





TERRACE FLOOR - FLOORING LAYOUT

NOTES

1. This drawing is sole property of 'Pithavadian and Partners' and must not be reproduced or altered either in full or in part by anyone without consent from us or be passed to any individual or company not authorised by us.
2. Any discrepancy in the drawing should be brought to the immediate attention of the Architect.
3. All dimensions in millimeters and levels in meters.
4. Dimensions to be followed as indicated and not to be scaled.

LEGEND

- TILE 600 X1200
- HIGHLIGHTER TILE

REV.	DATE	DESCRIPTION	DRAWN	CHKD.
------	------	-------------	-------	-------

REVISIONS

AS BUILT				
CONSTRUCTION				
APPROVAL				
INFORMATION				
TENDER				
SCHEME	*			
ISSUED FOR				

TENDER

NAME OF THE PROJECT:

BANK OF BARODA
MYLAPORE BRANCH

CLIENT:

BANK OF BARODA
MYLAPORE

DRAWING TITLE:

BANK OF BARODA
TERRACE FLOOR - FLOORING LAYOUT

STRUCTURAL CONSULTANT:

ZACHARIA GEORGE F.I.E

SCALE: 1:100 @ A3	DESIGN BY: PDG	DRAWN BY: RUTVI	CHECKED BY: PDG
DATE: 23.01.2025	SIGN:	SIGN:	SIGN:

ARCHITECTURE * INTERIORS * PLANNING * ENGINEERING * MANAGEMENT

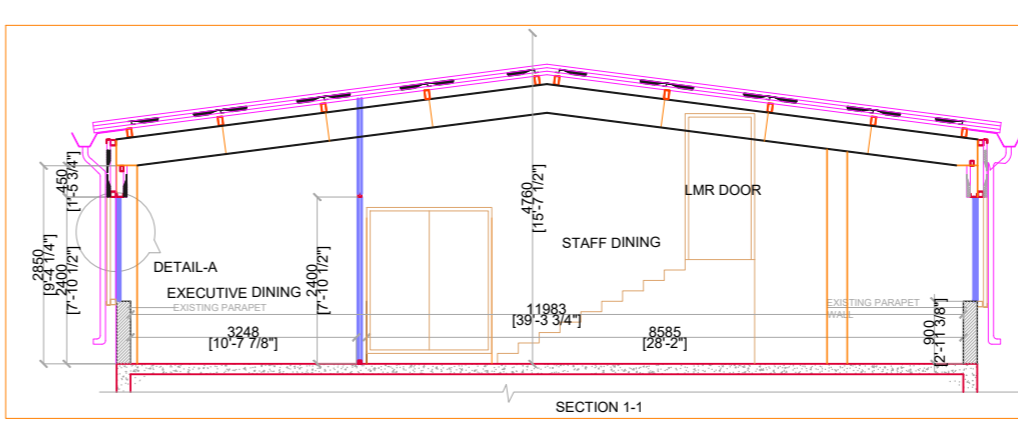
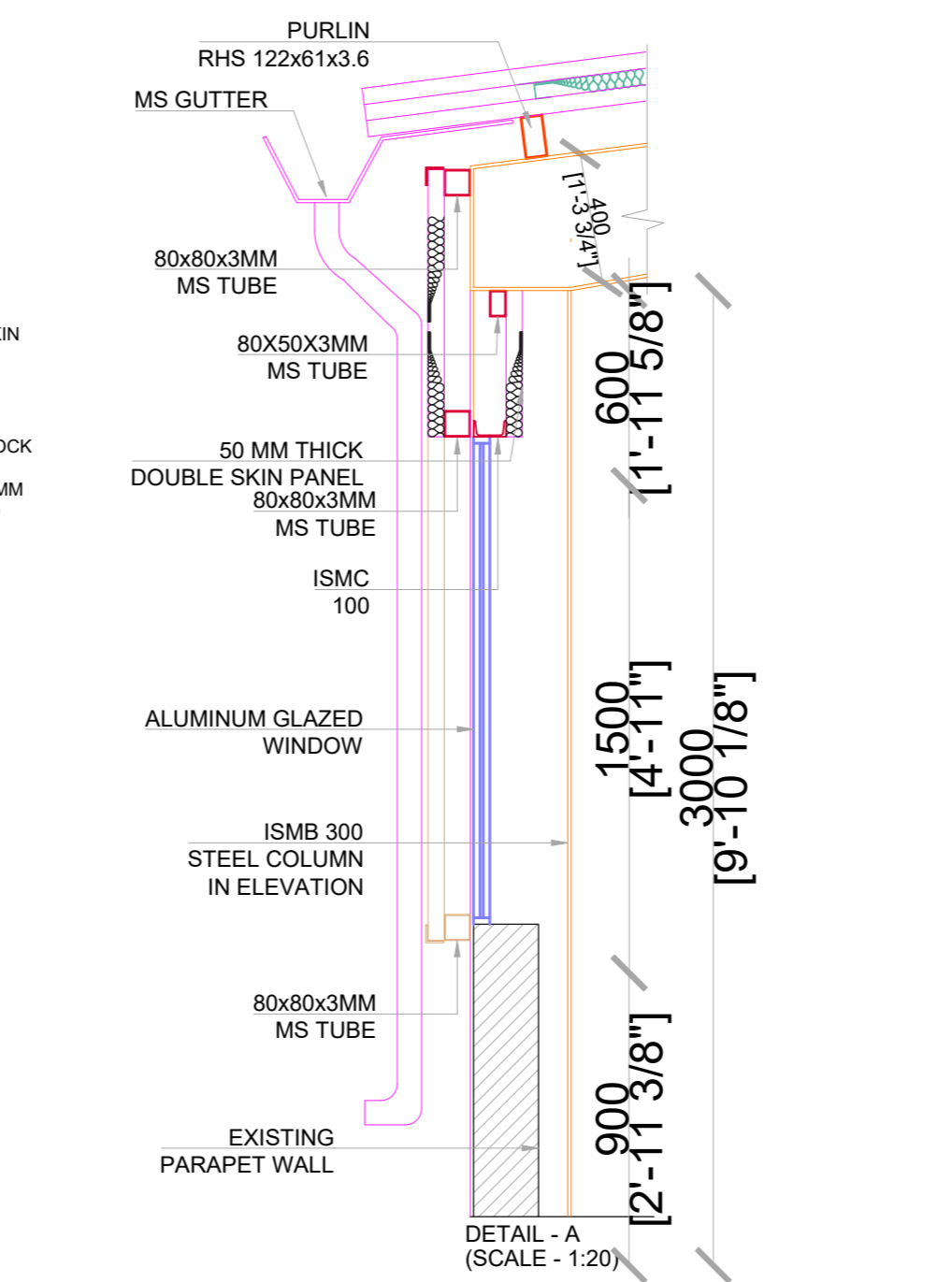
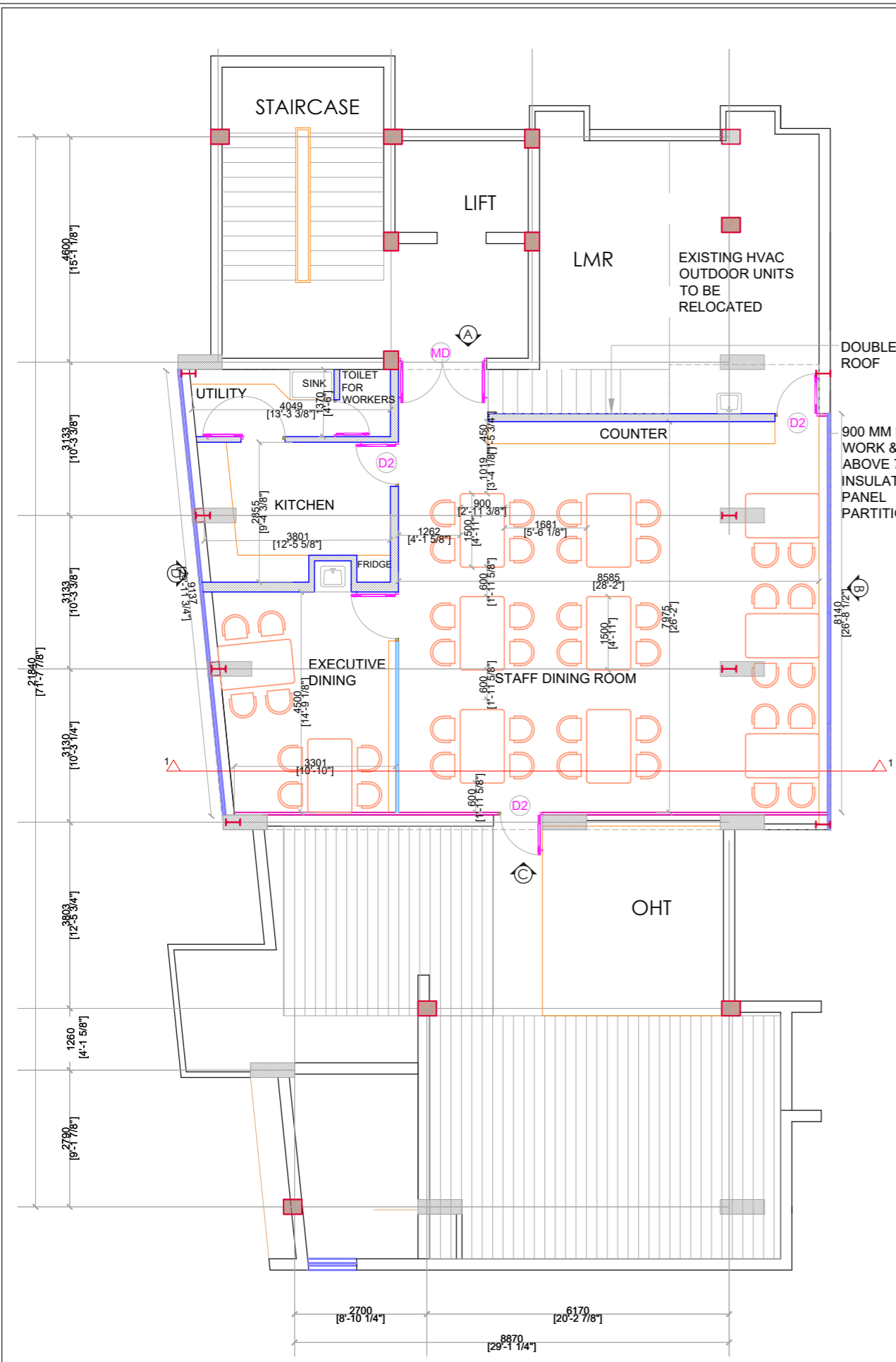
PITHAVADIAN AND PARTNERS

Chennai • Bengaluru • Kochi • Hyderabad
10, MURUGAPPA ROAD, NAWAB GARDENS,
KOTTURPURAM, CHENNAI - 600 085

Phone : +91 (0) 44 2447 0033 / 44 / 66
Fax : +91 (0) 44 2447 0888 / 4213 2797
email : mail@paparchitect.com
website : www.paparchitect.com



DWG NO: xxxx-01-AR-06 (SHT 01 OF 01) REV NO: R0



NOTES

- This drawing is sole property of 'Pithavadian and Partners' and must not be reproduced or altered either in full or in part by anyone without consent from us or be passed to any individual or company not authorised by us.
- Any discrepancy in the drawing should be brought to the immediate attention of the Architect.
- All dimensions in millimeters and levels in meters.
- Dimensions to be followed as indicated and not to be scaled.

LEGEND

- EXISTING PARTITION
- FULL LENGTH GLASS PARTITION
- PARTLY GLAZED PARTLY PANELLED PARTITION
- SOLID FULL HEIGHT PARTITION
- HALF HEIGHT PARTITION
- PROPOSED WALL

REV.	DATE	DESCRIPTION	DRAWN	CHKD.
REVISIONS				

AS BUILT
CONSTRUCTION
APPROVAL
INFORMATION
TENDER
SCHEME *
ISSUED FOR

TENDER

NAME OF THE PROJECT:
BANK OF BARODA
MYLAPORE BRANCH

CLIENT:
BANK OF BARODA
MYLAPORE

DRAWING TITLE:
BANK OF BARODA
TERRACE FLOOR PLAN AND SECTIONS

STRUCTURAL CONSULTANT:
ZACHARIA GEORGE F.I.E

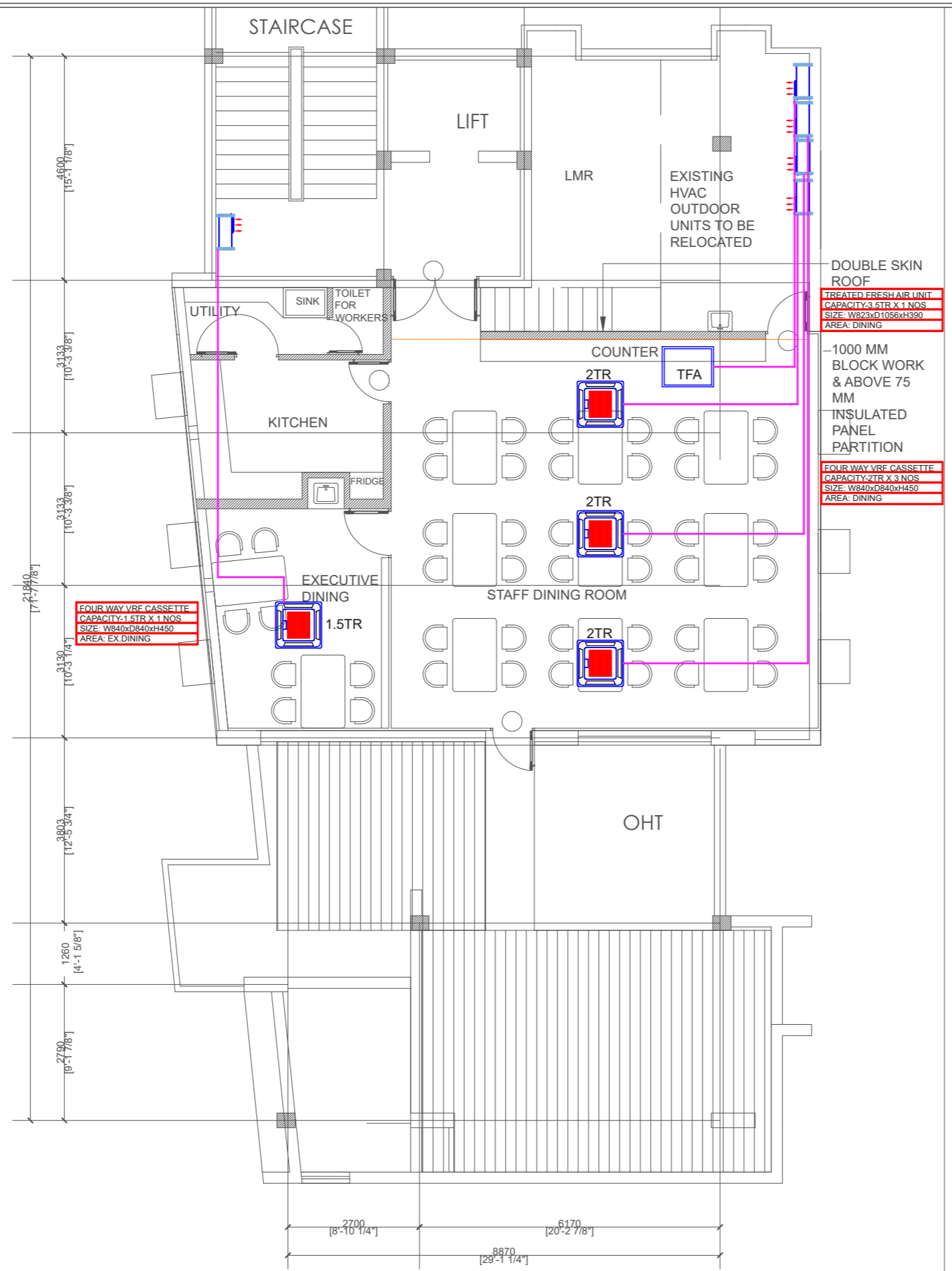
SCALE: 1:100 @ A3	DESIGN BY: PDG	DRAWN BY: RUTVI	CHECKED BY: PDG
DATE: 23.01.2025	SIGN:	SIGN:	SIGN:

ARCHITECTURE * INTERIORS * PLANNING * ENGINEERING * MANAGEMENT

PITHAVADIAN AND PARTNERS
Chennai • Bengaluru • Kochi • Hyderabad

10, MURUGAPPA ROAD, NAWAB GARDENS,
KOTTURPURAM, CHENNAI - 600 085

Phone : +91 (0) 44 2447 0033 / 44 / 66
Fax : +91 (0) 44 2447 0888 / 4213 2797
email : mail@paparchitect.com
website : www.paparchitect.com



TERRACE FLOOR

NOTES

1. This drawing is sole property of 'Pithavadian and Partners' and must not be reproduced or altered either in full or in part by anyone without consent from us or be passed to any individual or company not authorised by us.
2. Any discrepancy in the drawing should be brought to the immediate attention of the Architect.
3. All dimensions in millimeters and levels in meters.
4. Dimensions to be followed as indicated and not to be scaled.

SYMBOL	DESCRIPTION
	SUPPLY AIR DUCT
	FRESH AIR DUCT
	ACOUSTIC INSULATION
	THERMAL INSULATION
	FLEXIBLE DUCT
	REFRIGERANT PIPE
	DRAIN PIPE
	CASSETTE AC
	SUPPLY AIR GRILLE
	RETURN AIR GRILLE
	VCD-VOLUME CONTROL DAMPER
	HIGH WALL SPLIT AC
	REFNET

DOUBLE SKIN ROOF
 TREATED FRESH AIR UNIT
 CAPACITY: 3.5TR X 1 NOS
 SIZE: W823xD1056xH390
 AREA: DINING

-1000 MM BLOCK WORK & ABOVE 75 MM INSULATED PANEL PARTITION

FOUR WAY VRF CASSETTE
 CAPACITY: 2TR X 3 NOS
 SIZE: W840xD840xH450
 AREA: DINING

FOUR WAY VRF CASSETTE
 CAPACITY: 1.5TR X 1 NOS
 SIZE: W840xD840xH450
 AREA: EX. DINING

REV.	DATE	DESCRIPTION	DRAWN	CHKD.

REVISIONS	
AS BUILT	
CONSTRUCTION	
APPROVAL	
INFORMATION	
TENDER	*
SCHEME	
ISSUED FOR	

NAME OF THE PROJECT:
 PROPOSED RENOVATION OF BANK OF BARODA
 MYLAPORE BRANCH

CLIENT:
 BANK OF BARODA
 MYLAPORE

DRAWING TITLE:
 HVAC LAYOUT
 TERRACE FLOOR

STRUCTURAL CONSULTANT:
 ZACHARIA GEORGE F.I.E

SCALE: 1:100 @ A3	DESIGN BY: AKILAN	DRAWN BY: AKILAN	CHECKED BY: PDG
DATE: 04.03.2025	SIGN:	SIGN:	SIGN:

ARCHITECTURE * INTERIORS * PLANNING * ENGINEERING * MANAGEMENT

PITHAVADIAN AND PARTNERS
 Chennai • Bengaluru • Kochi • Hyderabad
 10, MURUGAPPA ROAD, NAWAB GARDENS,
 KOTTURPURAM, CHENNAI - 600 085
 Phone : +91 (0) 44 2447 0033 / 44 / 66
 Fax : +91 (0) 44 2447 0888/4213 2797
 email : mail@paparchitect.com
 website : www.paparchitect.com

