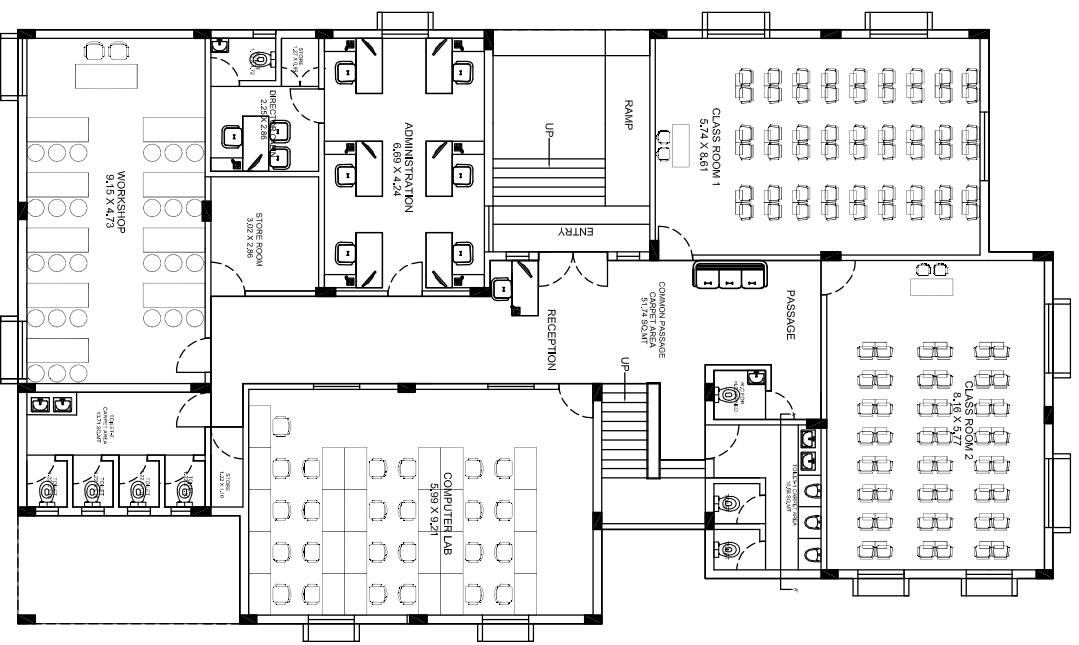


BSVS - AHWA, DIST:- DANG



GROUND FLOOR

AREA STATEMENT OF GROUND FLOOR			
SR.NO.	PARTICULAR	CARPET AREA	
		ACTUAL	SUGGESTED
1	ADMINISTRATION	6.89 X 4.24 29.37 SQ.MT	396.26 SQ.FT 400 SQ.FT
2	DIRECTOR CABIN TOILET FOR DIRECTOR CABIN	2.26 X 2.86 1.12 X 1.72	6.44 SQ.MT 1.92 SQ.MT
3	CLASS ROOM 1	5.74 X 8.61 49.42 SQ.MT	62.24 SQ.FT 62.24 SQ.FT
4	CLASS ROOM 2	8.16 X 5.77 47.08 SQ.MT	331.77 SQ.FT 700 SQ.FT
5	COMPUTER LAB	6.89 X 9.21 63.47 SQ.MT	693.83 SQ.FT 500 SQ.FT
6	WORKSHOP	9.15 X 4.73 43.28 SQ.MT	465.70 SQ.FT 600 SQ.FT
7	STAIR FOR DIRECTOR	1.27 X 1.89 2.39 SQ.MT	13.56 SQ.FT 19.97 SQ.FT
8	COMMON STORE ROOM	3.02 X 2.86 8.64 SQ.MT	106.53 SQ.FT 190 SQ.FT
TOTAL CARPET AREA OF GROUND FLOOR		2599.42	3200.00
TOTAL BUILT UP AREA OF GROUND FLOOR		4137.22	

NOTE :- ALL THE DIMENSIONS MENTIONS IN THE DRAWINGS ARE IN METER UNLESS WHEREVER IT IS SPECIFIED

BUILT UP AREA CALCULATION

GROUND FLOOR = 384.50 SQ.MT = 4137.22 SQ.FT.
 FIRST FLOOR = 354.31 SQ.MT = 3812.38 SQ.FT.
TOTAL BUILT UP AREA = 738.81 SQ.MT = 7949.60 SQ.FT.

PROPOSED INTERIOR FURNISHING
 LAYOUT
 BSVS :- AHWA

ALTERNATIVE :- 01
 SCALE :- N.T.S.
 DRAWN BY :-
 CHECKED BY :-
 DATE :- 19/04/2024



SHYAMAL GANDHI & ASSOCIATES
 ARCHITECTS & INTERIOR DESIGNER

BANK OF BARODA, VALSAD REGION

21, VIR NAGAR SOCIETY, OPP. I.D.B.I. BANK,
 NR. GAYATRI HOSPITAL, BHIMIPURA, AHMEDABAD
 :- (079) 27640161
 :- 9016310164