

SUMMARY OF CONTRACT:

S.NO.	ITEM	UNIT	AMOUNT.
A	INTERIOR FINISHING WORKS (12 PAGES)	RS/-	
B	ELECTRICAL WORKS.(10 PAGES)	Rs/-	
C	AIR CONDITIONING WORKS.(2 PAGES)	Rs/-	
	SUB TOTAL	Rs./-	
	DISCOUNT IF ANY	Rs/-	
	TOTAL =	RS/-	
	GST EXTRA AS APPLICABLE		

SECTION A					
ITEM NO	DESCRIPTION	QTY	UNIT	RATE	AMOUNT
1	DISMANTLING WORK				
	Note: Dismantling to be done in parts as per the instructions with proper support and covering of other areas from dust and falling debris, coordinating with other contractors/ agencies.				
	Item includes removing, cleaning, stacking the usable . Item also includes taking permissions from the concerned departments/ building authority or MCD as required.				
	Including costs of all necessary measures, safety features, nets, scaffolding, lead, lift, cleaning after disposal etc.				
	All material obtained from dismantling or demolition shall be the property of the owner unless otherwise specified and shall be kept in safe custody until they are handed over to the engineer -in charge.				
	Any damage to property, structure, expansion joint, shall be repaired/made good by the contractor at his own cost no payment shall be made in this regard to contractor. Measurement to be on Sq.mt. basis of the clear plan area of floor(excluding strong room and toilets)				
1.1a	Carefully Dismantling/ Removing of existing furnishing, furniture, false ceiling, existing floor tiles, wooden partitions ,wooden laminated paneling, electrical work, door as specified by architect , cabinets, air conditioning work, outside ACP paneling, etc. complete in all respect at ground hall , etc. (The contractor should ascertain themselves the quantum of dismantling comparing the proposed layout plan/work and the existing layout) . And disposing the unserviceable malba from site on day-to-day basis and stacking serviceable items at space provided by Bank.	1	No.		
1.1.b	Rebate For Salvage Value Of Old Items				
	Salvage value for all the furnishing useable material such as partition, false ceiling frames , channels, paneling, tables, cash cabin, only wooden cabinets, electrical wires , switches , light fittings, wall fans, exhaust fan and existing air conditioners only 2 nos (old units prior to 2022). The contractor should ascertain themselves the quantum/quantity of such items from the proposed work/layout plan and existing provision/layout plan). Rates exclude New 4 AC units , Chairs , Sofa , Steel RACKS/CABINETS. Note: The amount mentioned for the salvage value would be reduced from the overall value of the tender , to determine the net value of the tender . No additional amount would be paid to contractor for the removal of items and its disposal from site.	-1	Nos.		

2	CIVIL WORK				
2.1	Vitrified tile flooring and skirting				
	The measurement to be on sq. mt. basis of the plan area of flooring				
	Rates to include , Protection of newly laid floor during interior work: Rate shall include Providing and laying polythene and layer of 12 mm thick Plaster Of Paris in two layers on new flooring surface (For the protection of floor surface during other activities).				
	Rate should be inclusive of the cost of removing this protective layer, (after the work is completed) carrying all debris out of site and dumping it to municipal authorized. Dumping ground, cleaning the entire covered flooring area complete in all aspect.				
	Providing and laying premium double glazed/ charged Vitrified Tiles of sizes 600 x 600 of Johnson - Antarctic white shade or equivalent make having thickness as per manufacturer's specifications in single or two colour/ shade flooring pattern/ design. The tiles to be fixed after levelling of the existing floor as may be required with cement mortar 1:3 (one part cement & 3 parts coarse sand) and then fixing the tiles with compound (Unatile/ Fevimate) including Grouting the joints of flooring tiles, using laterite epoxy grout of approved shade to the full depth, including filling /grouting and finishing complete as per direction of Engineer-in- charge. Basic rate of tile 60 /- Sq.ft.	140	SQ.MT		
	Make - Johnson , Kajaria, Nitco, Somany				
2.2	Providing and laying tile skirting 600 mm length x 75 mm ht. laid on cement mortar bedding same as (item no 2.1) floor specification complete in all respect.	8	R.MT.		
2.3	Vinyl Flooring				
	Providing and laying PVC vinyl flooring of Marvel, LG, Marco polo/ equivalent of approved shade in vinyl planks of size 6" x 36" & 2mm thick, complete in all respect as per manufacturer specifications .	13.20	SQ.MT		
2.4	Granite stone at entry steps				
	Providing & fixing 18 mm thick. pre- polished pre moulded, machine cut Granite Stone for staircase tread ,riser, skirting, with edge molding, etc. complete with all details drawings The stone to be fixed/laid with cement mortar 1:3 (1 cement: 3 coarse sand) as per design. Joints treated with white cement, mixed with matching pigment, epoxy touch up including high gloss polishing the stone after finishing work, complete to the satisfaction of Architect/ Engineer. (Stair case tread: Stone flooring to be finished with 4mm, 3 nos. grooves, nosing at the edge and finished with half round molding etc.) (item to include removing and disposing off existin marble at steps) Basic price of stone is RS. 120/- Sq.ft.	7.00	SQ.MT		

3	PARTITION				
	<p>The rate shall include the frame work above false ceiling level that is upto RCC roof slab. Measurement of height shall be taken from finished floor level, up to the level of false ceiling, i.e., finish area of partition. In case of varying heights on either side of partition, average height shall consider. The Main framework of partition should be fixed to RCC ceiling. but payment to be considered up to bottom of false ceiling only. The rate to include provision of extra framework as necessary for skirting and making cut-outs for electrical switch plates, switch boxes, light fittings light etc. making provision for laying conduits as per drawings & directions. All woodwork if used to be applied with 2 coats of fire-retardant paint and 1 coat of wood preservative with anti-termite treatment properties. Centre to center spacing of partition framework may vary to make provision for fixing dado rail / to adjust the level of glass or for fixing counter / storage units or otherwise as per site requirement. Laminate sheet used should be 1mm thick of plain / wood grain in gloss / matt/ suede finish with high density protective surface layer and reverse side of adhesive bonding quality conforming to IS: 2046 Type S, including cost of adhesive of approved quality.</p>				
3.1	Full Height Glazed Partition in 12 mm thk. Toughen glass.				
	<p>P/F Glass Partitions of 12 mm thick. toughen glass Polished edge. The Fixed glass to be fixed using slimline aluminium frame section (K-LITE 25 series of Ozone)or approved make , of size 25x22MM / 25x25mm to be fixed on to the floor/wall/ ceiling as per frame, will be on four sides with I & T and L for glass joints along with required gasketof approved shade etc. complete as per Architectural drawings and direction of Engg-in-charge. The item includes toughen glass 2400 mm height maximum, and above is laminated partition . complete in all respect as per item no.3.2 (Glass Make- Saint Gobain/Modiguard/Asahi)</p>	13.10	SQ.MT		
3.2	FULL HEIGHT SOLID LAMINATED PARTITION				
	<p>Providing and fixing in position solid Full Height partition appx.75 mm thk. in Aluminium anodized Box Sections of JINDAL or approved make. Frame 50 mm x 50 mm clear size heavy duty with 16 gauge placed at framework of 600 X 600 mm grid (horizontally and vertically) fixed rigidly at floor lvl. With fasteners, other end fixed to top RCC roof. Completing partition by fixing 12 mm thick fire retardant plywood conforming to IS: 5509 (with one side coat of approved primer) fixed both sides of aluminium frame and then covering outer face of ply at both sides with 1mm thick Laminate (approved shade), including 6 mm groove in ply to be form by fixing additional 6mm thk.50 mm wide ply on aluminium frame work , as per design</p>	55.00	SQ.MT		

	Rates to include all fittings fixtures hardware and 6mm thk. toughen glass(6'x5') at manager side partiton complete in all respect. Door in partition shall be measured as partition, Including door frame (75X40mm) for shutter of steam beech /teak wood with single leaf shutter (3'x8') made with wooden laminated flush door with glass slit in circle/ as per design and handles on both sides of shutter (hardware, fittings, fixtures etc. in heavy duty SS such as lock of 6 lever of Godrej or Dorset make with SS mortise handle of approved make and model.				
	The rate shall be inclusive of PU paint /polish on door frame/ exposed wooden surface, door closers, SS heavy duty hinges, tower bolts, SS foot operated door stopper, SS buffer along the back side and any other related hardware, fittings, fixtures etc. required to the complete satisfaction of the Architect. (Aluminium section - Jindal or Equivalent)				
3.3 Low Height laminated Partition					
	Providing & fixing Low Height laminated Partition 1200 mm high with same specifications for framing as item no. 3.2 , but with 12mm toughened glass above 900 mm , fixed as per design/ details. Item to include 3" x 1" steam beech wood moulding on top complete with melamine / PU polished finish including base preparation as per manufacturer specifications. complete to the satisfaction of the Architect / Bank's Engineer. Rates to include, fixing of soft board panel appx. 4'x18" with fabric mounted above wherever required, making provision for electrical conduits, switches and junction boxes.	4.10	SQ.MT		
3.4 Cash Cabin front glass					
	P/F 12 mm thk. Toughened glass with pencil polish edge in two pices or as / design fixed with D - bracket, with 8" x 8" cemi cylindrical opening.	1.16	SQ.MT		
3.5 Cash Cabin Partition 1850 height					
	P/F partition with frame work and specification same as item no.3.2 . The item include P/F 12 mm thick (impact resistant glass) toughen glass with pencil polish edges all around from 3'-0" height till top fixed with aluminium glass profile . The side partition will have an opening of 200 mm x 100 mm in partition at 800 mm lvl. Rates to include all fittings fixtures hardware, complete in all respect.	5.02	Sq.mt.		
	Door in partition shall be measured as partition, Cash cabin door 1600 mm Height x 750 mm width x 30mm thick laminated both sides. It shall have sturdy hinges and an aluminum handle duly powder coated. Each door must be provided with a spring-loaded night latch of the outward opening type. The door frame will have a cross member at a height of 1800mm.				


3.6	FULLY GLAZED DOOR				
	P/F TOUGEN GLASS DOORS: Installation of fully glazed frameless glazed door (Single or double leaf of size as mentioned in drawing and as directed by the Architect) made out of 12 mm thk. Toughened glass and the door shall be fixed with Dorma ,Hafele , Enox or approved make floor springs with SS finish patch fittings on top, bottom. Lock shall be of Dorma , Hafele, Enox or approved make. The door shall have lock in the center of approved make with 450 mm to 600 mm long SS handle of 25 mm dia. (for internal doors) and 900 mm long SS handles of 25 mm dia. (for main entry doors) to be fitted horizontally/vertically as per instructions of the Architect. The Rate shall be including the making of necessary holes in glass for Access control locks, complete in all respect with all hardware, fittings, fixtures etc. complete in all respects. All necessary hardware, fittings, fixtures to be approved from the Architect or Bank's Officials before actual application of the same. Any change in the specifications must be first approved from the Architect and the Bank.				
3.6.1	Single leaf door opening size (900 mm x 2400mm)	4.45	Sq.MT.		
3.6.2	Single leaf door opening size (1050 mm x 2400mm)	5.20	Sq.MT.		
4	PANELING				
4.1	LAMINATED Paneling				
	Providing & fixing LAMINATED Paneling with frame work of 45 x 25 mm in Aluminium anodized Box Sections of JINDAL or approved make @ 600 mm c/c in both directions, finished with 12 mm thick commercial grade ply and then finished with 1.0 mm thick laminate in two or more colour. Paneling to have steam beach wood moulding on top edge , complete with High gloss PU paint of approved colour, . Panelling to have provision of extra frame work as necessary for skirting and making cutouts for electrical switch plates, switch boxes, light fittings light etc. making provision for laying conduits as per drawings & directions etc. complete to the satisfaction of the Architect /Bank's Engineer. (Base price of laminate to be used to be Rs. 50/ sq.ft.).	50.00	SQ.MT		
4.2	LACQUER GLASS				
	Providing & fixing Lacquer Glass paneling with frame work and base frame as specified on (item no. 4.1). finished with 8 mm thk. Commercial grade ply and then finish with 6.0 mm thick extra clear lacquer single colour, as per drawings & directions. complete to the satisfaction of the Architect /Bank's Engineer. Rates to include extra ply Backing required for levelling of glass and laminated panelling where ever required. (Base Price of lacquered glass to be used to be Rs. 300/ sq.ft. .	5.10	SQ.MT		
4.3	EXTERNAL ACP CLADDING WORK				
	Location: Along the Frontentry walls/ covering rolling shutter as directed by the Architect or as per site conditions.				
	Material: 4.00 mm thick. External grade Aluminum composite paneling of approved make.				

	Shade: Equivalent make – Pure white -10 (100) or Silver metallic 500.				
	Providing and fixing of 4.00 mm thick. external grade Aluminium composite panelling of Alubond /Alcobond or equivalent make with framing of aluminium tube section of min. 37.5mmx50mm and 20 gauge at a spacing of 600mm center to center both ways(vertical and horizontal) ACP to be of approved shade in 600mm wide panels or distributed equally. ACP sheets to be fixed to the frame with 3M make adhesive along with mirror screws. Joints to be finished with silicon based sealant. ACP sheets (Alubond/ Eurobond/ Fujibond/ Alcobond) to be min. 4mm thick with aluminum foil thickness to be min. 0.25mm on both sides. Fixing into a neat finish in aesthetic point of view, without any undulations in facia all complete as per Drawing and instruction of Architect In-charge Item includes silicon sealant (Dow Corning 789) masking tape scaffolding,lead,lift,wastage , as may be required etc. complete as per site conditions.	36.00	SQ.MT		
	4.4 WALL PAPER				
5	Providing and fixing approved high quality decorative, completely strippable, non- woven, environment friendly wall paper/wall covering of minimum weight 250 gsm as per selected design, model , shade, colour, steady and good impact resistance, good breathability, washable, no deformation, no shrinkage and no air gap after decor. (Quoted (without GST) Base Price of wall paper to be used to be Rs. 80/ sq.ft.). Rate to include the base preparation on wall with putty and 3 coats of enamel paint.	16.00	SQ.MT		
	5 FALSE CEILING				
	Item includes providing False Ceiling in plane, curve shape and design. Suspending system and frame work shall match layout of A.C. units , electrical / fire protection wiring / fixtures, etc. Rate to include provision of extra frame work, necessary scaffolding needed due to layout of other utilities referred above and fixtures etc. (Measurement shall be taken of the plan area only nothing extra for cove design and verticle sections)				
	5.1 Gypsum Board False Ceiling				
	Providing and fixing Gypsum Board False Ceiling with INDIA GYPSUM ULTRA main ceiling sections at 1200 c/c and cross members at 450 c/c of INDIAN GYPSUM. The grid work to be suspended from ceiling with hangers at every 1200 c/c in both directions. The Framework to be as per manufacturer's specifications. 12.5 mm thick. Tapered edge gypsum plain board conforming to IS: 2095- (Part I) : 2011. Gypsum board to be screwed to the frame of suitable size as required , including jointing and finishing to a flush finish of tapered and square edges of the board with recommended jointing compound, jointing tapes , finishing with jointing compound in 3 layers covering up to 150 mm on both sides of joint .	55.00	SQ.MT		


	And two coats of primer suitable for board, all as per manufacturer's specification and also included cost of making openings for light fittings, grills, diffusers, cutouts made with frame of perimeter channels suitably fixed, necessary frame work including cove, curve designs, lift, scaffolding, along with final finish 3 or more coats of White acrylic emulsion paint or plastic paint etc. all complete as per drawings, and direction of the Engineer in Charge.				
5.2	Mineral Fibre Acoustic Ceiling				
	Providing and fixing False Ceiling with Mineral Fibre Acoustic Ceiling Tiles of Armstrong/ USG/ Boral with MICROLOOK edges and having noise reduction properties laid on exposed grid system with 15mm wide Silhouette type T-section flanges of white colour, main runners spaced at 1200 mm c/c securely fixed to the soffit of structure with approved hangers at 1200 mm maximum c/c. Flush fitting 1200 mm crossed tees to be interlocked between main runners at 600 mm c/c to form 1200 x 600 modules. 1200 mm cross tees to be crimped. 600 x 600 module to be formed by fixing 600 mm long flush fitting cross tees centrally between the 1200 cross tees. Ceiling tiles of Dune Premier of size 600 x 600 x 16 mm (thk.) to be placed in the grid. Rate to include making necessary cut-outs or openings for light fixtures, air conditioners and other utilities etc. complete to the satisfaction of Architect/ Bank's Engineer.	85.00	SQ.MT		
6	POP AND PAINT				
6.1	P.O.P INTERNAL WALL				
	P/A P.O.P. on internal wall, average thickness 9 mm with line, plumb and level, surfaces for the smooth base of paint work. Rates to including v groove in P.O.P at distance of 6' appx. c/c	50.00	SQ.MT		
6.2	INTERIOR PAINT				
	P/A White Matte Luster Paint for internal walls as per the manufacture specifications. including applying additional coats wherever required, to achieve even shade and colour.	120.00	SQ.MT		
	Make and shade: Royal Luster Asian Paints - Morning Glory – 0765 or equivalent make.				
	Erecting scaffolding at all levels, preparing the surface by rubbing the surface by sand papers of different grade, removing all dirt, smoke, grease, loose plaster etc. if any from the existing surface cleaning the surface thoroughly and removing all the dirt from the surface. Providing and applying three coats of approved quality luster/ acrylic emulsion paint over the required number of coats of approved cement primer in all internal walls all complete including carrying out of necessary surface preparation and smoothening of surface with Birla white putty (2 COATS) as per manufacturer's specification and finished in plain/ clear/ smooth/ rough surface as per site condition etc.				
	Rate shall include required protection by covering the furniture by plastic sheet so as to avoid any damage and keeping the surface intact including complete cleaning after completing the painting,				

7	FURNITURE-				
7a	All Tables/ Counters/Work stations to have 25 mm thk. Post form laminated MDF board and 19mm thk. commercial ply at sides , modesty and 1.0 mm thk. laminate finish on exposed vertical surfaces. 1.5 mm thk. Laminate on horizontal surfaces along with 0.8 mm thk. white laminate on inside drawer surface . All Tables should be independent units , placed not fixed to partitions.				
	Table Top				
	Table top shall be made from minimum 25mm thick post form laminated MDF board. All edges shall have machine-applied minimum 2mm thick PVC edge lipping. Top should have MS ivory /matching to top powder coated wire manager. Both sides of table should be laminated on inside and outside.				
	Modesty Panel				
	The Modesty panel will be of 19 mm commercial ply with laminate both sides in two or more colour as per pattern. All exposed edges shall be lipped with minimum 2.0mm thick machine pressed PVC edge banding and other edges shall be finished with minimum 0.8mm edge banding.				
	Drawer Pedestal				
	Drawer Pedestal to be made from 12 mm thk. commercial ply with 19mm thk. commercial ply FASCIA with 1.0 mm thk. laminate finish as per approval complete inside and outside .				
	It shall have two small upper drawers and one bigger filing drawer at bottom. All exposed edges shall be lipped with minimum 2.0mm thick PVC edge banding. The back and sides of drawer units should be in same height as front .				
	The drawer movement will be on telescopic Channel. All telescopic channels should be of hettich and all hinges should be "ecomat clipon hinges" of Hettich for cabinet shutter.				
	Each pedestal unit will be provided with a centralized locking mechanism comprising of a multi-drawer lock fitted in the uppermost drawer fascia (of Godrej). All 3 drawer fascia shall be provided with stainless steel handles.				
	Side Rack				
	Side storage unit Outer casing shall be made from minimum 19mm thick commercial ply ,complete laminated inside and outside, with top in 25 mm post form laminated MDF. All exposed edges shall be lipped with minimum 2.0mm thick PVC edge banding. The unit will be provided with lockable shutters. Shutters shall be having with "C"-shaped stainless steel handles of minimum 96mm length and locks complete as per drawing.				
	CPU TROLLEY				
	Providing and placing heavy duty CPU trolley, (125mm to 240mm adjustable CPU trolley made out of MS with white powder coating and lockable castors)				
	Key board tray				

	Providing and installing 2'-6" wide, 16" deep wooden laminated wooden key board, with heavy duty telescopic channels of approved make as specified , made out 19 mm thk. Comm. ply having 1 ¼" laminated edge at front and sides.				
7.1	MANAGER TABLE :				
	P/F Manager table (5'-6"x 2'-9") 2'-6" high and side Rack /storage units (3'-3" X 18") 2'-6" high with CPU trolley, drawer pedestal and key tray etc complete in all respect as specified above and as per details . Only difference is that manager table top , and side unit top should be finished with 12 mm thk. high density acrylic (Dupoint/ samsung/ Marino) and rest of structure is laminated as specified above.	1	NO		
7.2	Teller tables				
7.2.1	P/F Teller counter T3 each 5'-0" x2'-0") height 2'-6" with readymade CPU trolley, Chest of drawer and keyboard provision complete in all respect as specified above (6a) and as per detail. Apron finished with silver grey AICA LAMINATES INDIA PVT.LTD. GRADE -AL-FR-HPL C/P-MBA475, (and orange central band 150 mm wide) and working surface top shall be finished with frosty white laminate. Rate to include soft board , shall be in orange on soft board panels and mounted on SS supports 50 mm above finished level of the table between every two counters. Fabric make – Beige shade Soft board size per table: Size 580 mm x 380 mm.	2	NO		
7.2.2	P/F Teller counter (4'-0" x2'-0") height 2'-6" with rest specifications same as item no. 7.2.1. complete in all respect.	2	No.		
7.2.3	P/F Teller counter (3'-0" x2'-0") height 2'-6" without drawer unit with rest specifications same as item no. 7.2.1. complete in all respect.	1	No.		
7.3	P/F Table for daftari 4'-0" x 2'-0" height 2'-6" with readymade CPU trolley, Chest of drawer and keyboard provision complete in all respect as specified above (7a) and as per detail.	1	No.		
7.4	P/F Officer table T-1 (5'-0"x2'-6") 2'-6" high and side Rack /storage units (3'-0" X 18")2'-6" high with readymade CPU trolley, Chest of drawer and keyboard provision , complete in all respect as specified above and as per detail.	2	No.		
7.5	Providing /Placing round table of size 3'-0" Dia with height 2'-6", with base of metal frame and Table top in 25 mm thick ply finished with 1 mm thick laminate, and edge finished with PVC matching colour 2 mm edge binding tape. Base metal frame shall be made of 50mm dia. CRCA pipe with RAL 7021 steel grey finish legs and 100 mmx100mm x 2mm CRCA sheet (ERP:3744) with RAL 7021 steel grey PC finish for fixing of table top and anothe base plate of required size at floor Lvl. complete in all respect as per attched design .	1	No.		

7.6	CASH COUNTER				
	<p>Providing & fixing two level Cash Counter as per layout plan, Writing top, Upper top, front projected face, sides and front apron all shall be made of 19mm thick comm. ply wood. Writing top and upper top, shall be made of 25 mm thk. post form laminated MDF Board of approved shade with approved edge profile as per approval. Sides and front apron Shall be made of 19mm thick comm. plywood The counter shall have CPU trolley, foot rest, key board tray as per specified above in head7a,</p>	1.52	Rmt.		
	<p>Drawer unit consist of three drawer with telescopic sliding channels with all around boxing made of 19mm thk. Ply wood with vertical support of the table as one side. Top drawer to have a provision of dividers to keep cash. Rest drawer specifications same as per item no.5a. The item to include a mirror above working top size 2'x1'. And soft board with fabric mounted above at inside area. All exposed surfaces shall have to be laminated. (Size 4'-6" x 2'-9" deep and writing top at 2'6" ht. and upper top at 3'-6" ht.)</p>				
7.7	P/F CUSTOMER'S WRITING				
	<p>P/F customer's writing table,3'-6" high, made of 19 mm thk. Commercial board with wooden lipping on exposed ends and laminate on all exposed surfaces .Table top shall have 12 mm thk. Glass for top fixed with S.S. buttons and vertical division for keeping forms in 12 mm thk. glass only. Below the divisions table to have check drop box and suggestion box. The glass shall be fixed as per design. The table top shall be of Size 5'-0" x 12" and height 3'-6".</p>	1	NO		
7.8	<p>Providing & placing in position lounge chair (Wipro/Equivalent) having stainless steel frame/wooden frame, chrome plated/wooden /brass finished legs, velvet uphostry etc. complete as per selection and choice of Architect/ Bank's Engineer.(Basic price to be Rs. 7500/ chair).</p>	1	No.		
	<p>(The Bank reserves the right to select any model/ series of base price mentioned).</p>				
					

	8 CABINET				
	8.1 LOW HEIGHT CABINATE				
	Providing and fixing storage cabinet 450 mm depth and 750 / 900/1200 mm high made out of 19mm thick Commercial plywood of approved make including complete lamination of 1 mm thk laminate inside and outside and the fixing of shelves at 400 mm to 450 mm c/c and the shutters shall be in 19 mm thick commercial ply and back covered with 8 mm commercial plywood , duly painted with anti-termite paint (on outer face) . Top shall be made of 25 mm thk. post form MDF Board of approved shade with edge moulding as per approval, The width of each shutter shall not exceed 18". The exposed edge of ply shall have wooden lipping, or rubber tape . The rates are all inclusive of necessary hardware SS multipurpose lock from Godrej , hinges(Ecomat from hettich) tower bolt, SS handle , Magnetic catcher, of approved design. Complete in all respect. The Front elevation area shall be considered for payment.	10.00	SQ.MT		
	8.2 FULL HEIGHT CABINATE				
	Providing and fixing full height storage cabinet 450 mm Depth made out of 19mm thick Commercial plywood of approved make including the fixing of shelves at 400 mm to 450 c/c with rest of specifications same as 8.1 , complete in all respect as per approval and drawing.	20.00	SQ.MT		
	8.3 P/F pantry cabinet 600 deep and 700 high, in 19 mm thick. BWR Waterproof ply below the existing rcc counter . Cabinet to have top row of drawer with cutlery tray of 550 mm width in one and bottom shutter with provision of shelf inside, complete laminated inside with 0.8 mm thick laminate and outside with 1 mm thick High gloss laminate of approved shade, complete in all respect including 2 mm PVC edge binding tape of matching shade at exposed edge, hinges, Hardware, latches, magnetic catchers, telescopic channel, etc. of approved makes.	1.25	SQ.MT		
	The Front elevation area shall be considered for payment.				
	8.4 P/F pantry wall cabinet 300mm deep and 600mm high, in 19 mm thick. BWR Waterproof ply . Cabinet to have shutter with provision of shelf inside, complete laminated inside with 0.8 mm thick laminate and outside with 1 mm thick High gloss laminate of approved shade, complete in all respect including 2 mm PVC edge binding tape of matching shade at exposed edge, hinges, Hardware, latches, magnetic catchers,etc. of approved makes.	0.60	SQ.MT		
	9 MISCELINIOUS ITEMS				
	9.1 FROSTING FILM				
	Providing and fixing Digital Glass Frosting Film (3M) for frosting as per design in all shapes including curve shapes etc. complete to the satisfaction of Architect/Bank's Engineer.	8.00	SQ.MT		

<p>9.2</p>	<p>Providing and fixing Rectangular LED mirror made of premium quality "Saint Gobain" glass with smooth polished edge , Color Of The LED – Warm White, with a smart touch switch or sensor that makes it glow as soon as one approaches the mirror. complete as per manufacturer specification and approval from Bank/ Architect. Mirror Size 750 x 1000</p>	<p>1.00</p>	<p>Nos.</p>		
					
<p>9.3</p>	<p>P/F 12mm thk.200mm deep Toughen glass shelf in D or rectangular shape below the mirror , fixed with SS fittings , complete in all respect. Length of shelve is 900 mm.</p>	<p>3.00</p>	<p>Nos.</p>		
<p>9.4</p>	<p>Providing and applying enamel paint at existing locker doors (inside , outside with frame) and steel almira (all sides / visible area) after cleaning existing paint and grinding all surface to gain smooth bear metal surface ,Finishing the metal surface with steel prime and then with Alkyd PU paint of two or more coat of required colour to give an even shade , of approved brand complete as per manufacturer specifications, and instruction by project incharge . (Asian Paint/Berger Rangoli/J&N Paint/Nerolac)</p>				
<p>9.4.1</p>	<p>Steel almira variable size</p>	<p>8.00</p>	<p>Nos.</p>		
<p>9.4.2</p>	<p>Locker doors</p>	<p>2.00</p>	<p>Nos.</p>		
	<p style="text-align: right;">Total sum of</p>		<p>RS,-</p>		

Bank of Baroda Nagloi Branch

SECTION A : ELECTRICAL INSTALLATION WORKS				
SUMMARY				
A.	POINT WIRING			Rs.
B.	CONDUITING AND WIRING FOR TELEPHONE, COMPUTER & T.V. SYSTEM .			Rs.
C.	SUPPLYING AND FIXING OF LIGHTING FIXTURES			Rs.
D.	EARTHING SYSTEM			Rs.
E.	DISTRIBUTION BOARDS			Rs.
F.	CABLES,MAINS,SUBMAINS & CABLE TRAY			Rs.
G.	SUB DISTRIBUTION BOARDS			Rs.
	GRAND TOTAL			Rs.

Bank of Baroda Nagloi Branch

S.No.	Description		Qty	Rate in Rs.	Amount in Rs.
A.	POINT WIRING				
	Note -				
	Point wiring rates are inclusive of 2x2.5+1x1.5 sq mm FRLS PVC insulated stranded copper conductor FRLS wires for circuit and 1.5 sq mm insulated earth wire. All wire should be FRLS				
1	Wiring for the following light points with 2X1.5+1X1.5 Sq.mm FRLS PVC insulated stranded copper conductor wires in concealed FRLS PVC conduits in F.ceiling / walls /ceiling as directed including providing 6 amps flush type switches, 5 sided G.I Boxes for housing switches and earthing complete as required.				
a.	First point controlled by one no. 6 amp switch.	Nos.	25		
b.	Loop Point	Nos.	40		
2	Wiring for 6 amps light plug outlets with 3x1.5 sq.mm PVC insulated stranded copper conductor wires in FRLS PVC Conduits in ceiling/walls/floor as directed including providing 6 amps flush type 5 pin socket and 6 amps switch with cover plate, 5 sided G.I boxes for housing switches, sockets and earthing complete as required. (for general areas/workstations)	Nos.	12		
3	Wiring for A/C outlet points with 2x4.0 +1x2.5 Sq mm FRLS PVC insulated stranded copper conductor wires in FRLS PVC conduit/wall/floor ducts as directed including providing 25 A socket with 25 amps SP MCB (Tiny Trip) 5 sided PVC Outlet Box for housing and socket and MCB and earthing with 2.5 sq. mm FRLS PVC insulated stranded Copper Conductor wires complete as required.	Nos.	1		
4	Providing and fixing 6 amps outlet on Light Point switch board including providing 6 amps flush type 5 pin socket and 6 amps switch with cover plate complete as required	Nos.	6		
5	Wiring for 3 nos 6 amps light plug outlets with 3x2.5 sq.mm PVC insulated stranded copper conductor wires in FRLS PVC Conduits in ceiling/walls/floor as directed including providing 3 nos 6 amps flush type 5 pin socket and 1 no 6 amps switch with cover plate, 5 sided G.I boxes for housing switches, sockets and earthing complete as required. (for UPS Outlets)	Nos.	12		
6	Wiring for 2 nos 6 amps light plug outlets with 3x2.5 sq.mm PVC insulated stranded copper conductor wires in FRLS PVC Conduits in ceiling/walls/floor as directed including providing 2 nos 6 amps flush type 5 pin socket and 1 no 6 amps switch with cover plate, 5 sided G.I boxes for housing switches, sockets and earthing complete as required. (for UPS Outlets)	Nos.	2		

Bank of Baroda Nagloi Branch

S.No.	Description		Qty	Rate in Rs.	Amount in Rs.
7	Wiring for exhaust / Wall Fan points with 3x1.5 sq.mm PVC insulated stranded copper conductor wires in concealed FRLS PVC conduits in F.ceiling / Wall/Ceiling as directed including providing 6 amps flush type switches 6 amps 3 pin socket near exhaust fan/wall fan, 5 sided G.I. boxes for housing switches and 6 amps 3 pin socket outlet and earthing and complete as required.	Nos.	14		
8	Wiring for 16 amps power outlet points with 4 sq.mm PVC insulated stranded copper conductor wires for the first power outlet and 2x4+1x2.5 sq.mm PVC insulated stranded copper conductor wires for the second outlet, in concealed FRLS PVC conduits in F.ceiling/ walls/Ceiling/floor ducts as directed including providing 16 amps flush type switch and 6 pin socket with cover plate, 5 sided G.I. outlet boxes for housing switches and socket, and earthing the third pin with 2.5 sq.mm PVC insulated copper conductor wires complete as required.	Nos.	2		
9	Wiring for 16 amps power outlet points with 4 sq.mm PVC insulated stranded copper conductor wires for the first power outlet and 2x4+1x2.5 sq.mm PVC insulated stranded copper conductor wires for the second outlet, in concealed FRLS PVC conduits in F.ceiling/ walls/Ceiling/floor ducts as directed including providing 16 amps flush type switch and 6 pin socket with cover plate, 5 sided G.I. outlet boxes for housing switches and socket, and earthing the third pin with 2.5 sq.mm PVC insulated copper conductor wires complete as required.(Two power outlets shall be connected on each circuit)	Set of two	1		
TOTAL CARRIED OVER TO SUMMARY					

Bank of Baroda Nagloi Branch

S.No.	Description		Qty	Rate in Rs.	Amount in Rs.
B.	CONDUITING AND WIRING FOR TELEPHONE , COMPUTER & T.V. SYSTEM.				
1	Providing and fixing of sheet metal enclose Krone Tag Block with following pairs consisting of necessary Back Mount Frame, disconnection modules and grommets complete as required.				
a	20 pair Telephone Tag Block and box	Nos.	1		
2	Supply,drawing and making connections with Telephone Main Junction box and Telephone Outlet Box with annealed tinned copper conductor, PVC insulated and PVC sheathed GI strip armoured / Unarmoured Telecommunication cable in Conduit Pipe from the P & T J				
a	10 x (2 x 0.6mm) armoured Telephone cable in Conduit Pipe	RM	40		
3	Wiring for VOICE from Jack Panel in data rack to computer workstation with Cat-6 voice cable in PVC conduits of size 20/ 25 mm including providing ferrules at both ends and termination at both ends including providing & fixing frame for Cat-6 with shutter, RJ 45 outlet, faceplate and mounting box complete of modular type. This work includes supply and laying of CAT-6 cable in PVC conduits throughout the lenght, from the I/O hub to the point.	Nos.	11		
4	Wiring for computer networking from Jack Panel in data rack to computer workstation with Cat-6 computer cable in PVC conduits of size 20/ 25 mm including providing ferrules at both ends and termination at both ends including providing & fixing frame for Cat-6 with shutter, along with 02 nos. RJ 45 outlet, faceplate and mounting box complete of modular type, This work includes supply and laying of CAT-6 cable in PVC conduits throughout the lenght, from the I/O hub to the point. (for two data points)	Nos.	10		
5	Wiring for computer networking from Jack Panel in data rack to computer workstation with Cat-6 computer cable in PVC conduits of size 20/ 25 mm including providing ferrules at both ends and termination at both ends including providing & fixing frame for Cat-6 with shutter, along with 01 nos. RJ 45 outlet, faceplate and mounting box complete of modular type, This work includes supply and laying of CAT-6 cable in PVC conduits throughout the lenght, from the I/O hub to the point.	Nos.	3		
6	Supplying and fixing 9 U (Rack with glass door, opening in the front power panel 1 (horizontal), cable manager 1 lock & key).	Nos.	1		
7	Supply, Installation, Testing & Commissioning of 24 port Jack Panel.	Nos.	1		
8	Supplying and fixing Patch Cord-2 Meter- (DBPS Mounting Cord)	Nos.	23		
9	Supplying and fixing Patch Cord-1 Meter-	Nos.	23		
	TOTAL CARRIED OVER TO SUMMARY				


Bank of Baroda Nagloi Branch

S.No.	Description		Qty	Rate in Rs.	Amount in Rs.
C.	SUPPLYING AND FIXING OF LIGHTING FIXTURES				
1	Supplying and fixing the following Lighting fixtures including lamps at site.Rate shall include all taxes and duties, transportation etc, complete.				
a.	1 x 36 watts Flourescent Light Fixture as per Philips Cat No. TBS 185/136 M1 HPF	Nos	6		
b.	14 Watt W LED Light fixtures as per wipro Cat No.LD71-121-XXX-50-XX-iris with Glass cover	Nos	28		
c.	38 watts LED Light fixture as per Wipro Cat No. CRCO10R038HP57 (working Area) or Equivalent Philips make	Nos	26		
d.	Exhaust fan 300 mm sweep with 1400 rpm speed inclusive of gravity louver shutters.	Nos	3		
e.	Wall Fan (450 mm) dia	Nos	11		
f.	LED Strip for cove lighting15W per 5 M with driver and necessary installation fittings Led strip light (5mtr.) make As specified in tender document or approved by bank.	RM	35		
	TOTAL CARRIED OVER TO SUMMARY				

Bank of Baroda Nagloi Branch

S.No.	Description		Qty	Rate in Rs.	Amount in Rs.
D.	EARTHING SYSTEM				
1	Providing and fixing in position the following copper strips and wires including providing all fixing accessories and effecting proper connections				
a.	GI tape 25mm x 6 mm	RM	30		
c.	GI wire 8 SWG	RM	100		
d.	10 Sq Copper wire including terminations etc as required For UPS /Server Rack Earthings	RM	75		
2	Supply,Installation, testing and commissioning of Maintenance Free Earthing of make Electrolytic Earthing comprising of type 'K' copper 2.4 mm wall thickness,60 MM Dia, hollow tube 10 feet long, 2.125 inches outer diameter completely filled with non hazardous metallic salts (Terrafill) to achieve an earth resistance of less than 1 ohms.(Provide Manhole chamber at the top for inspection purpose)	Nos.	2		
3	Supply, installation, testing and commissioning of sheet metal enclosed 300 x 300 x 200 (D) mm insulated earth distribution board with 1 nos. 50 x 6 mm copper tinned earth bars suitable for 6/8 nos connections complete with all fixing accessories as required.	Nos.	2		
TOTAL CARRIED OVER TO SUMMARY					

Bank of Baroda Nagloi Branch

S.No.	Description		Qty	Rate in Rs.	Amount in Rs.
E.	DISTRIBUTION BOARDS				
1	Supplying installing, connecting testing and commissioning of the following cubical type double door 3 rows vertical type 2mm thick sheet steel enclosed fully recessed type, TPN Miniature Circuit Breakers Distribution Boards dust proof, verm-in proof, with hinged and lockable doors complete with DP MCB's and inter-connection with copper wires, or copper tapes, cable glands-/conduit entry bushes, bonding to earth and paint-ing. Also provide separate neutral busbar for each phase. Provide separate Earth Links. Use brass thimbles for connections of all wires.				
1	Light & Power Distribution Board				
a	Supply and installation of sheet metal enclosed double door 12 Way TPN DB, each phase consisting of 12 Nos. 10/20 AMP SP MCB's and controlled by one number 100 mA sensitivity 63 AMPS DP ELCB backed up with 63 Amps DP MCB. For Light and Power	Nos..	1		
b	Supply and installation of sheet metal enclosed double door 12 Way SPN DB, each phase consisting of 12 Nos. 10/20 AMP SP MCB's and controlled by one number 63 Amps DP MCB. (For UPS Supply)	Nos..	1		
c	Supply and installation of sheet metal enclosed double door 10 Way SPN DB, each phase consisting of 6 Nos. 10/20 AMP SP MCB's and controlled by one number 63 Amps DP MCB. (For Emergency Light Supply)	Nos..	1		
d	Supply, installation, testing and commissioning of 63 amps DP MCB in M.S enclosure for UPS input/Output including making connections etc as required.	Nos.	2		
2	Supply & Fixing of Remotely controlled Emerergency push button Station for only OFF button Including relays/ Module and accessories including wiring and conduit locations at entry ,Cost of wire and Conduit included in this scope.	Nos.	1		
					
3	Supply, installation, testing and commissioning of sheet metal weather proof enclosure with 32 A DP MCB This shall include cable entry boxes both for incoming and outgoing cable) For AC Outdoor units . The enclosure shall be IP 66	Nos.	2		
4	Supply, installation, testing and commissioning of sheet metal weather proof enclosure with 32 A FP RCCB(300 mA) This shall include cable entry boxes both for incoming and outgoing cable) For AC Units .The enclosure shall be IP 66.	Nos.	3		
	TOTAL CARRIED OVER TO SUMMARY				

Bank of Baroda Nagloi Branch

S.No.	Description		Qty	Rate in Rs.	Amount in Rs.
F.	CABLES,MAINS,SUBMAINS&CABLE TRAY				
1	Supplying ,laying, effecting proper connec-tions, testing & commissioning of the following sizes of 1.1 KV armoured/ unarmoured PVC insulated PVC sheathed aluminium /copper conductor cables conforming to IS : 1554 Part I - 1976 with latest amendments laid over MS supports in existing RCC ducts/ laid in ground /laid on Cable Trays including clamping the cables to sup-ports in an approved manner as required complete with all accessories.				
a.	3.5 c x 50 mm XLPE AL AR CABLE	RM	30		
b.	4 c x 16 sq.mm XLPE COPPER AR CABLE	RM	65		
c	4 c x 6 sq.mm XLPE COPPER AR CABLE	RM	100		
d	4 c x 16 sq.mm XLPE AL AR CABLE	RM	25		
e	3c x 4 sq.mm XLPE AL AR CABLE	RM	60		
f	3c x 10 sq.mm Copper Flexible Cable for UPS Input /Output Supply	RM	85		
2	Supplying and making terminal joints for the following size of 1.1 KV PVC insulated copper conductor armoured cables including providing heavy duty copper terminal crimping lugs, solder, insulation tape, approved sealing epoxy compound,Single compression brass cable glands, effecting gland connec-tions and effecting terminal connections to the equipment complete as required.				
a.	3.5 c x 50 mm XLPE AL AR CABLE	Jt	4		
b.	4 c x 16 sq.mm XLPE COPPER AR CABLE	Jt	2		
c	4 c x 6 sq.mm XLPE COPPER AR CABLE	Jt	3		
d	4 c x 16 sq.mm XLPE AL AR CABLE	Jt	4		
e	3c x 4 sq.mm XLPE AL AR CABLE	Jt	2		
f	3c x 10 sq.mm Copper Flexible Cable for UPS Input /Output Supply	Jt	8		

Bank of Baroda Nagloi Branch

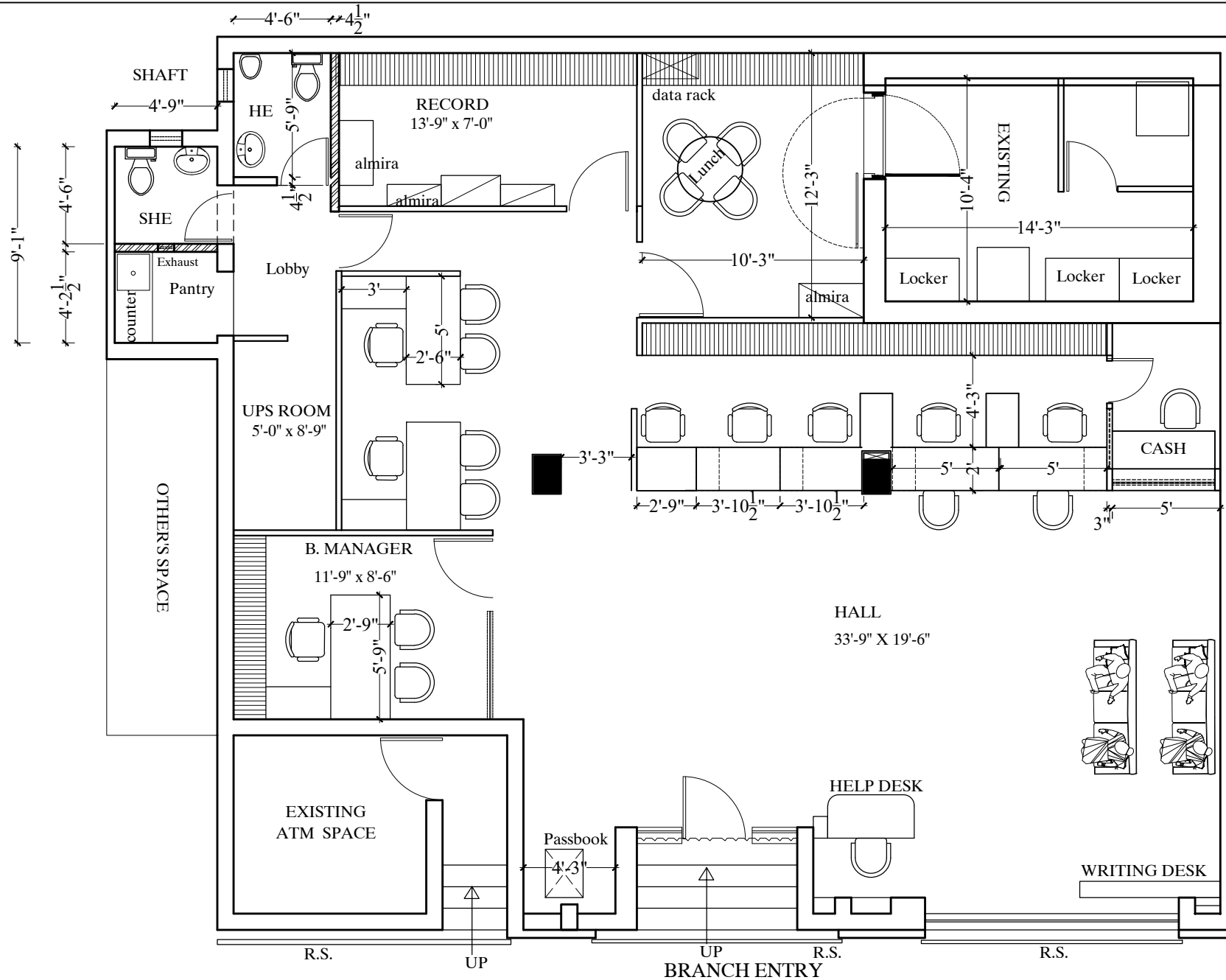
S.No.	Description		Qty	Rate in Rs.	Amount in Rs.
3	Design manufacture , supply and fixing in position the cable trays of the following sizes for supporting 1.1 KV grade armoured/unarmoured aluminium /copper conductor cables. Fabricate the cable trays from perforated 1.6/2mm thick M.S. CRCA sheet duly galvanised with expansion coupler plates duly galvanised, with bolts, washer and nuts. Knock out holes for cable connections as per approved design. The tray should comply with the specification of NEC (National Electric Codes) and NEMA (National Electric Manufacturers Association). The steel should be as per IS:226 and galvanising as per IS :2629/BS 729/ASTM 123. The fixing of cable trays include necessary ceiling suspended / wall mounted supports fixed in ceiling with Fabricated Ms Angle supports,Ms C channel,Base plate etc, The rate shall include bends, angles, Ts, HITECH ROD and all accessories complete Supports Shall be provided at every 1200mm. The cost of supports to be included. Supports must be welded to a square true ceiling base plate with arc welding, the base plate must be fixed to the true ceiling with 04 nos. of HILTI anchor fasteners. Supports must be made out of MS L angle type for cable tray width of 450mm and above. For Less than 450mm width tray support with hi-tech threaded rods & anchor fasteners. The maximum spacing of the supporting arrangement shall be 1. 2 M.				
a	150 mm wide x 40 mm x 1.6 mm thk	RM	15		
b	300 mm wide x 40 mm x 1.6 mm thk	RM	10		
	TOTAL CARRIED OVER TO SUMMARY				

Bank of Baroda Nagloi Branch

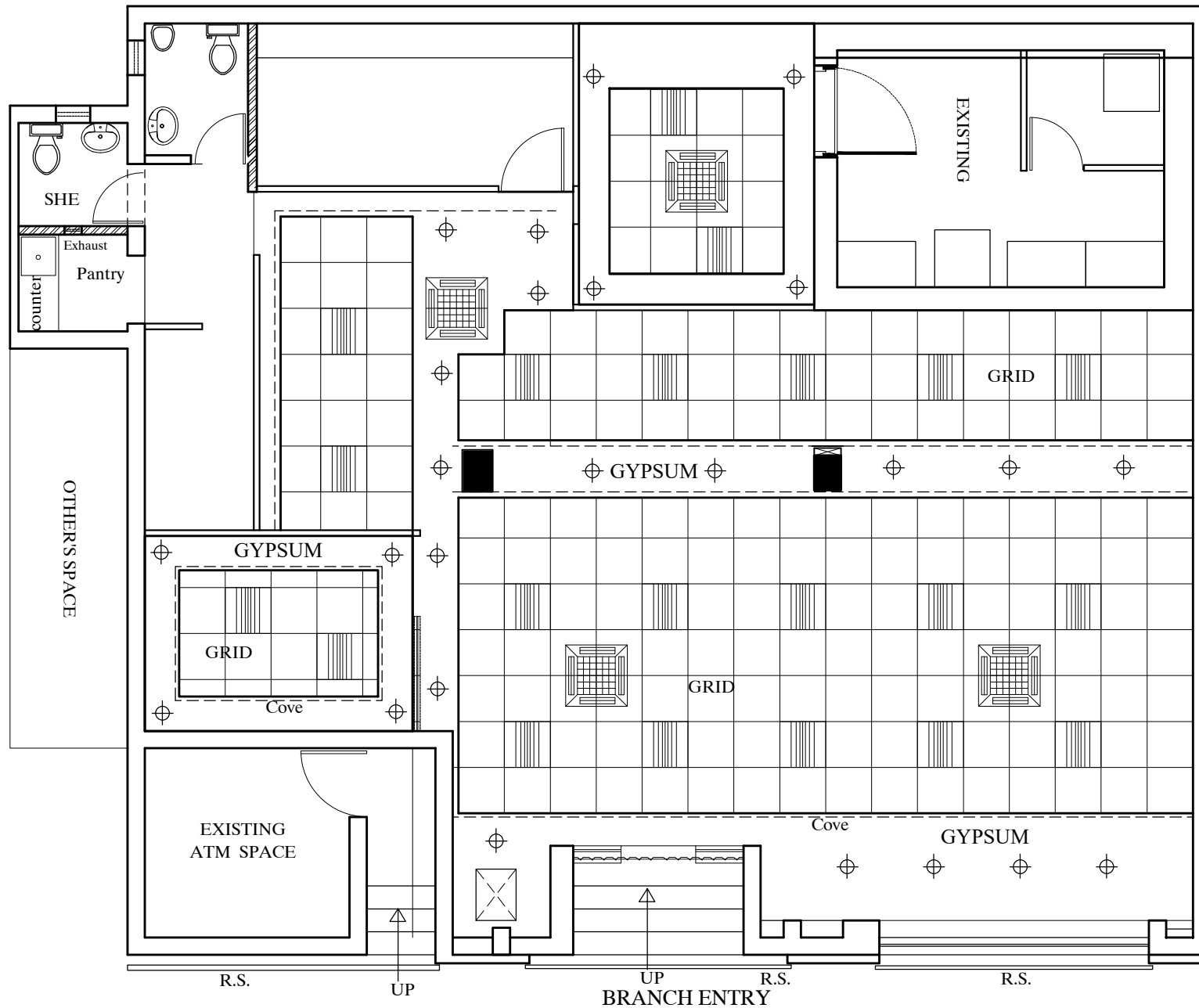
S.No.	Description		Qty	Rate in Rs.	Amount in Rs.
G.					
	SUB DISTRIBUTION BOARDS				
1					
	Sub Distribution Boards				
	Design, manufacture, supplying, assembling at site, installing, testing and commissioning of the following cubical type, dead front, 2mm thick sheet steel enclosed, free standing indoor type extendible Sub-distribution Boards with vermin proof hinged lockable doors for each compartment provide bus bar interconnections for incoming and outgoing including feeders earthing and painting and as per specifications.				
a.	The Sub Distribution Board - 1 for Light & Power SDB-1 shall consists of :				
	INCOMER				
	Provide 1 No 100 amp 4P Phase reversal switch as a main incomer				
	Main Incomer 1 No 125 Amp 4 Pole Manual Change over switch & 125 amps TPN MCCB (35 KA) terminals to receive 3.5 x 50 sq. mm AYFY cable connection on one side and Busbar connection on the other side.				
	BUSBARS				
	200 amps 4 pole busbar chamber of suitable length with Copper busbars. All busbars and interconnections shall be of suitable size copper strips current density of copper shall not be more than 1.6 Amps/ sq.mm provide 100% capacity for neutral bus bar.				
	INDICATING PANEL				
	3 nos phase indicating lamps each backed up with MCB and switch shall be provided for incomer.				
	Provide multifunction meter as a main incomer				
	OUTGOINGS				
	4 Nos.63 A TPN MCB (10 kA) suitable to receive 4 x 16 sq. mm AYFY Cable				
	5 Nos. 32/40 A TPN MCB (10 kA) suitable to receive 4 x 6 sq. mm AYFY Cable				
	4 Nos. 63 A DP MCB (10 kA) suitable to receive 3 x 10 sq. mm Copper Flexible Cable for UPS Supply				
	3 Nos. 32A DP MCB (10 kA) suitable to receive 4 x 6 sq. mm AYFY Cable				
	The Sub Distribution Board -1 as described above and specifications complete.	Set	1		
	TOTAL CARRIED OVER TO SUMMARY				

Bill of quantities Air Conditioning					
S.NO.	DESCRIPTION	UNIT	QTY.	RATE	AMOUNT
	SCHEDULE 'C' (AIR CONDITIONING) WORK				
	<p>NOTES:</p> <p>1) All cabling / piping to be installed neatly and with proper dressing, wherever exposed(outside building) it needs to be placed in PVC Channel 3"wide/ cable trays with cover & saddled properly. All the work of Drain pipe/cable shall be properly supported by clamps from the slab .</p> <p>2) All types of wall cutting are to be finished with cement plaster with proper finish from top side. No unfinished wall or floor surface will be accepted.In case of non-complecticon of finishing adequate amount will deducted from the bill to get the work executed at site by other agency.</p>				
1.1	<p>Supplying, erection, testing and commissioning following Roof mounted cassette units of (Mitsubishi/Daikin/Carrier) 5 star or Equivalent energy saving latest model – cassette (inverter units) with copper condenser.</p> <p>Comprising of indoor and outdoor unit , with cordless remote complete with all necessary fittings duly insulated with 9mm thick nitrile rubber pipe insulation with (evaporator coil – copper only),fan and fan motor, machine control panel improved Refrigerant Joints, .Air conditioners shall be fitted with hermetically sealed type suction cooled reciprocating or discharge cooled rotary compressor or scroll compressor . Compressor unit operating on R-22/R-410 . All complete as per drawing, approval and instructions of the Architect / Employer.</p>				
a)	3.0/2.9 TR Ceiling suspended Cassette type (three phase) split unit with 4 way air flow, 5 Star Inverter including all necessary fittings and mountings as specified by the manufacturer	Each	2.00		
b)	2 TR Ceiling suspended Cassette type (three phase) split unit with 4 way air flow, 5 Star Inverter including all necessary fittings and mountings as specified by the manufacturer	Each	1.00		
1.2	<p>Providing fixing and testing of copper refrigerant piping of following sizes duly insulated with nitrile rubber insulation of thickness as per unit manufacturer requirements.(From Indoor to outdoor Units)</p>				
a)	Supplying and laying of Copper refrigerant piping with nitrile rubber pipe insulation, both of size as specified by the manufacturer suitable for 3TR Cassette type AC (From Indoor to outdoor Units)	R.mtr.	66.00		
b)	Supplying and laying of Copper refrigerant piping beyond 3 Meterwith nitrile rubber pipe insulation, both of size as specified by the manufacturer suitable for 2TR/1.5 TR/1 TR Split type AC (From Indoor to outdoor Units)	R.mtr.	10.00		

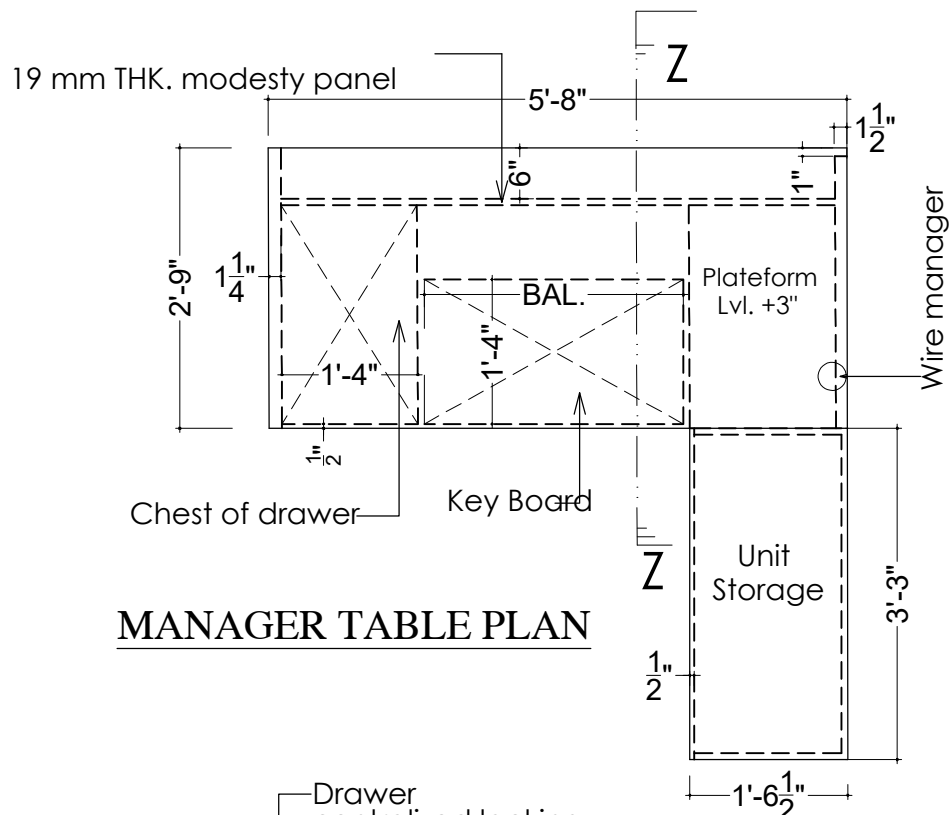
S.NO.	DESCRIPTION	UNIT	QTY.	RATE	AMOUNT
1.3	Providing and fixing drain piping up to drain as directed by the engineer in charge with all accessories e.g. elbows, unions, sockets, reducers, reducing tees, nipples etc. Complete job including cutting chiseling in walls, fixing with GI clamps, floor and making good of all chases/ cuts etc. and discharging the drain into a floor trap/ gully as per site conditions with insulation, both as specified by the manufacturer				
a)	32 mm dia PVC drain pipe for Cassette AC	R.mtr.	40.00		
B	40mm dia PVC drain pipe for Cassette AC	R.mtr.	10.00		
c	25 mm dia PVC drain pipe	R.mtr.	20.00		
1.4	Providing and fixing of lockable caging for outdoor unit grouted on wall or on roof with open able shutter made of 10 x 10mm MS square bars placed vertically @ 5" c/c welded with 40x 3mm MS flat all- round. The frame shall be of angle 35mm*35mm and it shall be fixed to wall or roof with proper MS bracket to tackle the weight of outdoor unit. Item includes all necessary hardware, priming coat, two or more coat of synthetic enamel paint,henger ,clamps ,lock other accessories etc. All complete as per approval and instructions of the Architect / employer. Size shall be adequate for AC outdoor size & sufficient space around the outdoor suitable for servicing purpose for Outdoor .				
	For 3.0 TR ceiling mounted cassette unit	Nos.	3.00		
1.5	Removing and Re-fixing 1.5 /2 TR. Existing Wall mounted split A/C. units including all necessary fitting, copper pipe upto 3m , interconnecting cable , gas filling etc. complete in all respect at manager cabin and lunch room .	nos.	2.00		
1.6	Electrical Cable				
a)	Supplying and laying of Extra Electrical interconnecting cable, Control cables from indoor to outdoor , of size as specified by the manufacturer suitable for 3TR Cassette type AC	R.mtr.	80.00		
b)	Supplying and laying of Extra Electrical interconnecting cable, control cable from indoor to outdoor , of size as specified by the manufacturer suitable for 2TR/1.5 TR/1 TR Split type AC	R.mtr.	10.00		
	TOTAL AIR CONDITIONING WORK				
	Note: The rates quoted includes all other taxes , duties , loading, unloading , transportation, other expenses etc to site only GST will be paid Extra				



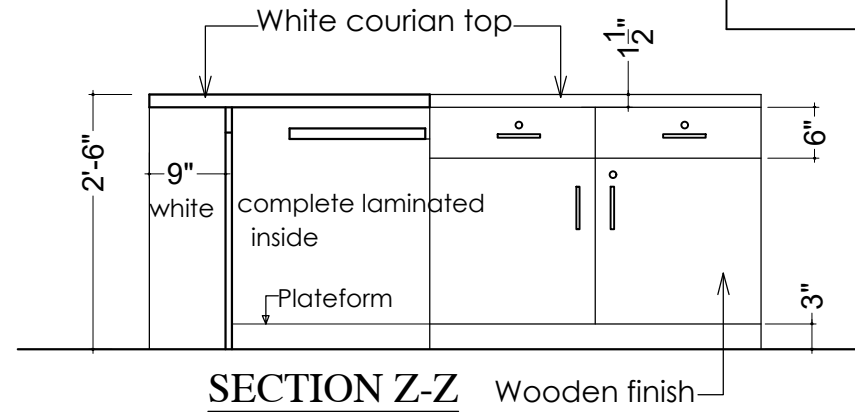
PROJECT: BANK OF BARODA NAGLOI BRANCH C1, YAADAV PARK, DELHI - 110041, PH.-011 25945132	TITLE: PROPOSED LAYOUT GROUND FLOOR	DATE:- DEC/24	DRG.No.: TD-1	ARCHITECTS :- bdsharma CONSULTING pvt. ltd C-1/8, BASEMENT, S.D.A. ADJ. AUROBINDO MARKET NEW DELHI-110016 PHONES:- 46029643, 26522528, email-bdsarchitect@gmail.com
		JOB No.: Bob/Nagl.	SCALE:- N.T.S.	



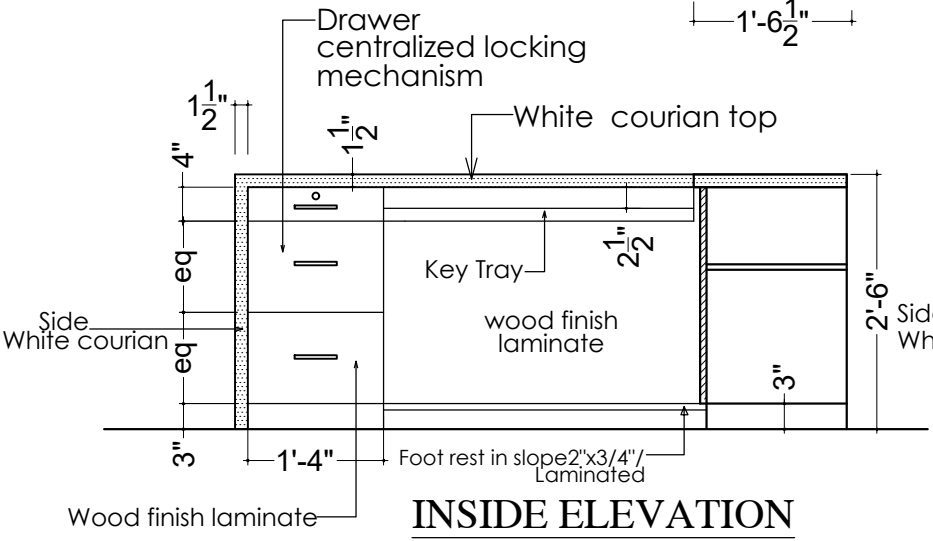
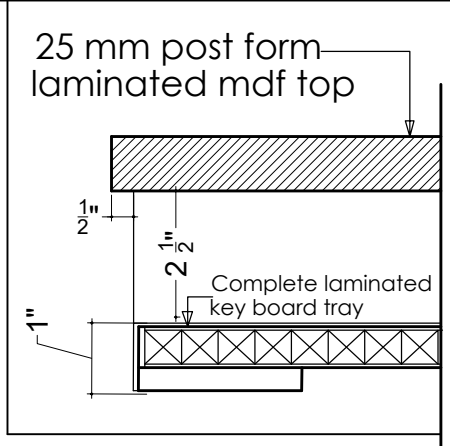
PROJECT: BANK OF BARODA NAGLOI BRANCH C1, YAADAV PARK, DELHI - 110041, PH.-011 25945132	TITLE: PROPOSED LAYOUT GROUND FLOOR	DATE:- DEC/24	DRG.No.: TD-2	ARCHITECTS :- bdsharma CONSULTING pvt. ltd C-1/8, BASEMENT, S.D.A. ADJ. AUROBINDO MARKET NEW DELHI-110016 PHONES:- 46029643, 26522528, email-bdsarchitect@gmail.com
		JOB No.: Bob/Nagl.	SCALE:- N.T.S.	



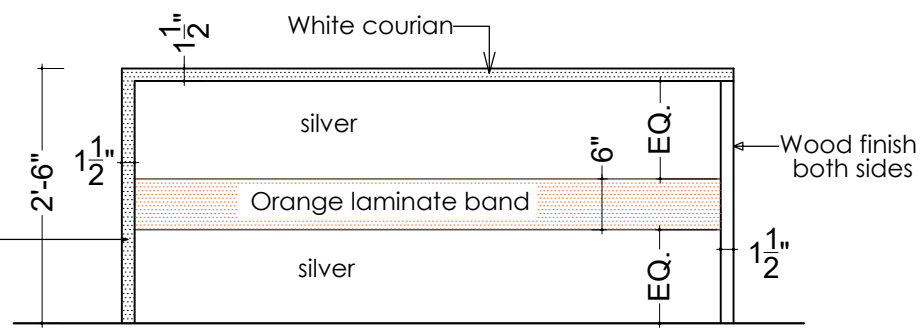
MANAGER TABLE PLAN



SECTION Z-Z Wooden finish



INSIDE ELEVATION



FRONT ELEVATION

TENDER DRAWING

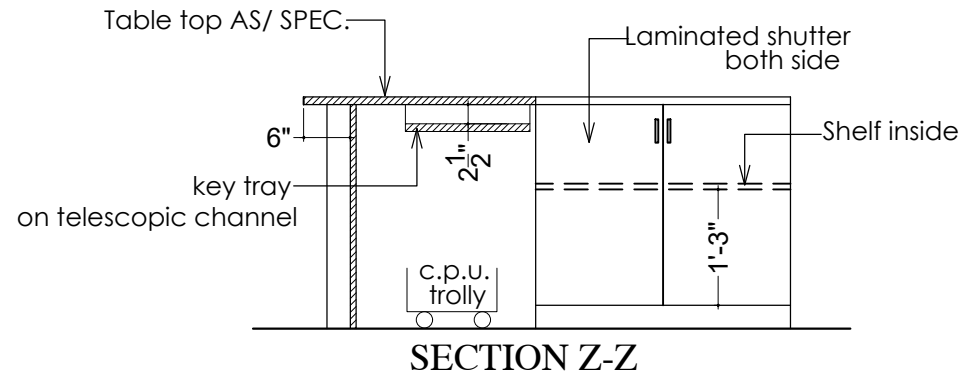
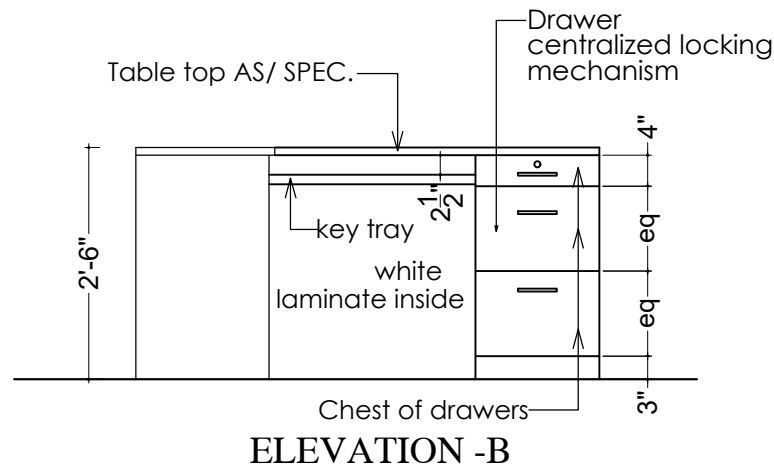
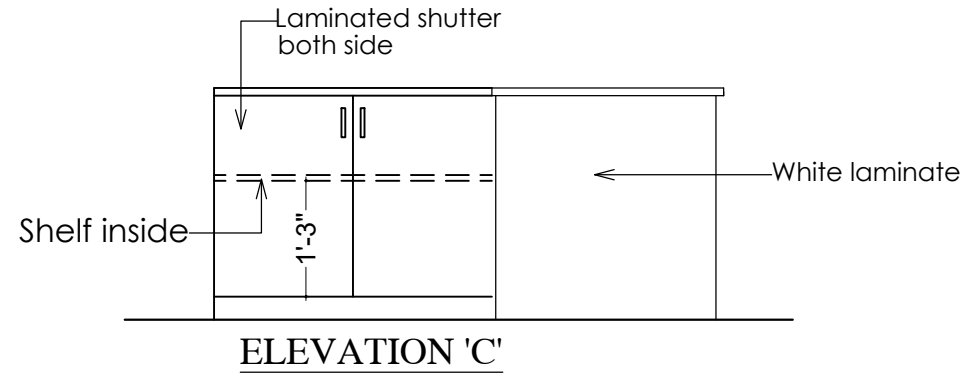
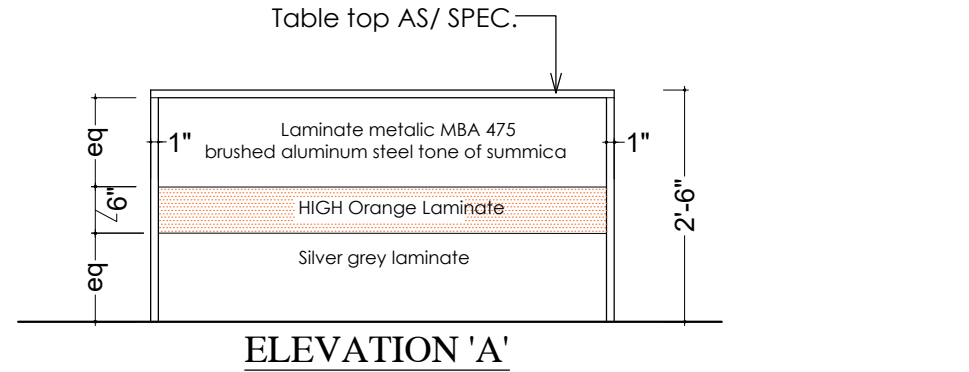
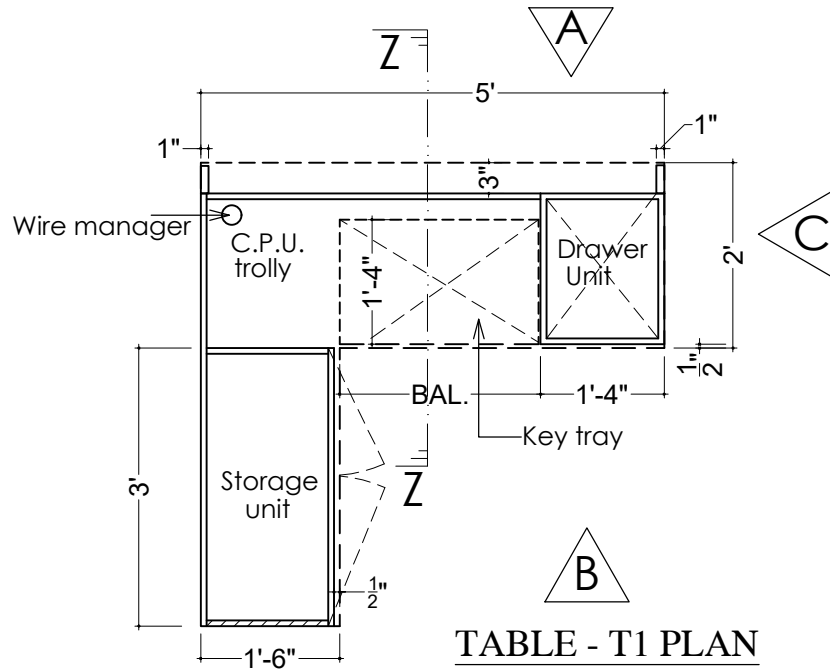
PROJECT:
BANK OF BARODA NAGLOI BRANCH
 C1, YAADAV PARK, DELHI - 110041, PH.-011 25945132

TITLE:
MANAGER TABLE

DATE:-
DEC/24
 JOB No.:
Bob/Nagl.

DRG.No.:
TD-3
 SCALE:-
N.T.S.

ARCHITECTS :-
bdsharma CONSULTING pvt. ltd
 C-1/8, BASEMENT, S.D.A. ADJ. AUROBINDO
 MARKET NEW DELHI-110016
 PHONES:- 46029643, 26522528,
 email-bdsarchitect@gmail.com



WORKING DRAWING

PROJECT:
BANK OF BARODA NAGLOI BRANCH
 C1, YAADAV PARK, DELHI - 110041, PH.-011 25945132

TITLE:
OFFICER TABLE- T1

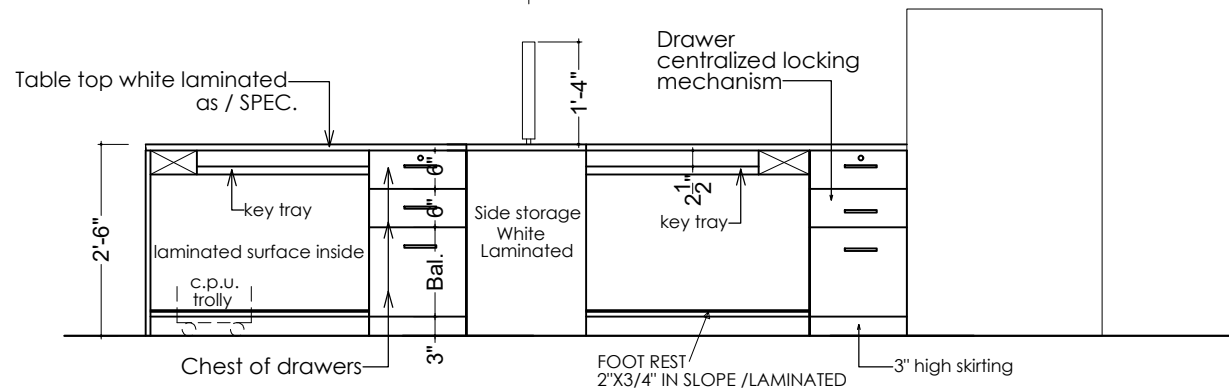
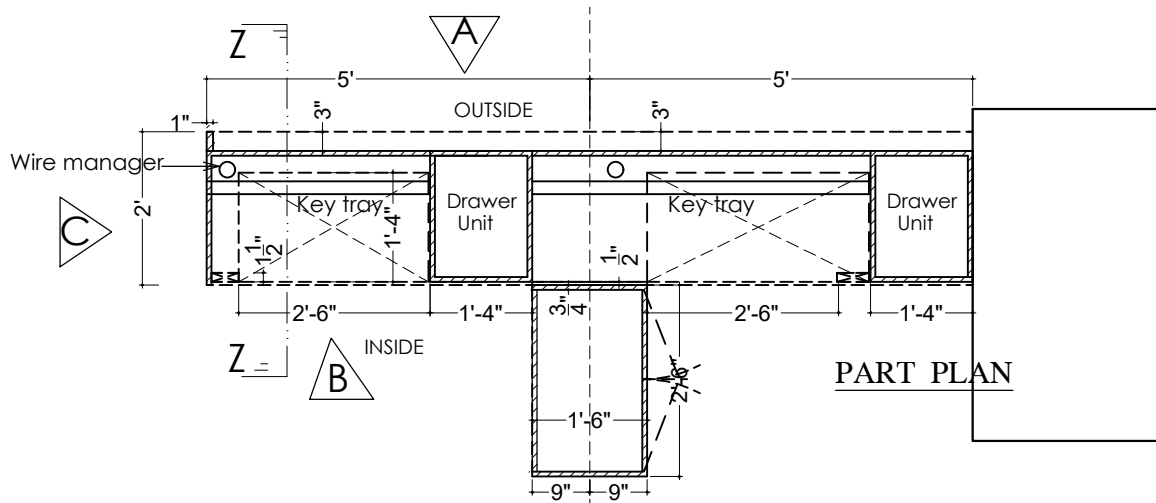
DATE:-
DEC/24

DRG.No.:
TD-4

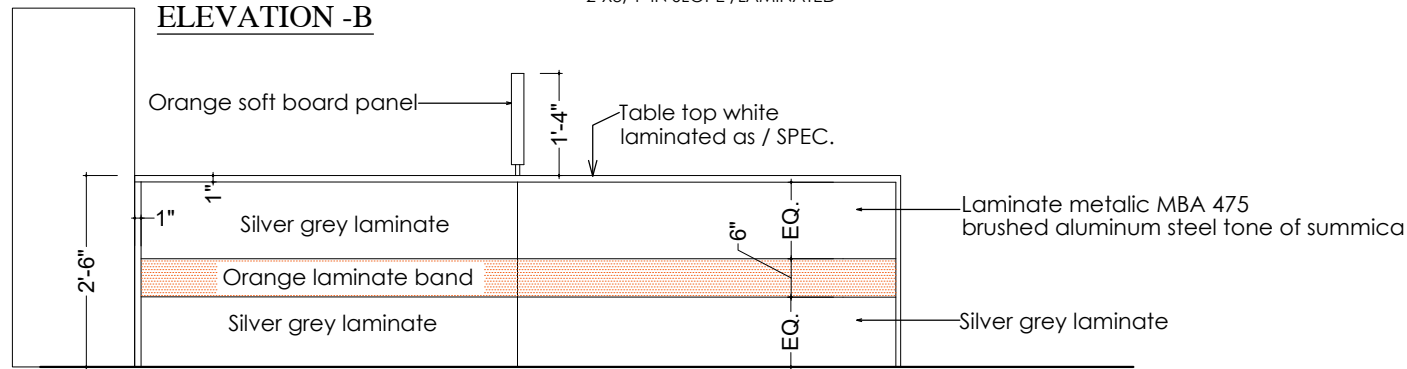
JOB No.:
Bob/Nagl.

SCALE:-
N.T.S.

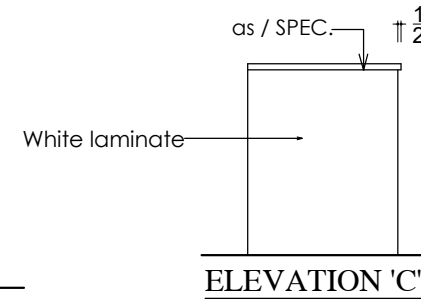
ARCHITECTS :-
bdsharma CONSULTING pvt. ltd
 C-1/8, BASEMENT, S.D.A. ADJ. AUROBINDO
 MARKET NEW DELHI-110016
 PHONES:- 46029643, 26522528,
 email-bdsarchitect@gmail.com



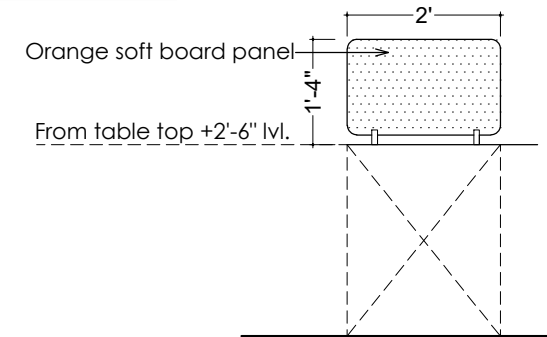
ELEVATION -B



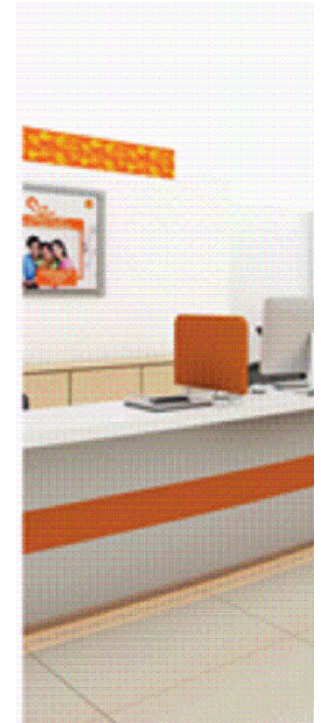
ELEVATION 'A'



ELEVATION 'C'



ELEVATION SOFT BOARD PANEL



WORKING DRAWING

PROJECT:
BANK OF BARODA NAGLOI BRANCH
 C1, YAADAV PARK, DELHI - 110041, PH.-011 25945132

TITLE:
OFFICER TABLE

DATE:-
 DEC/24

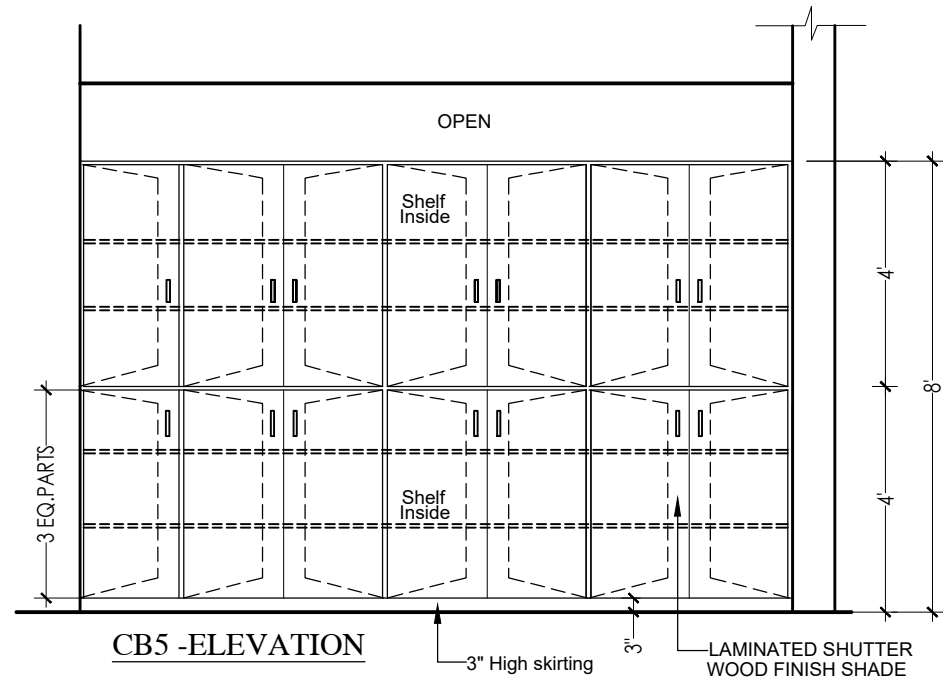
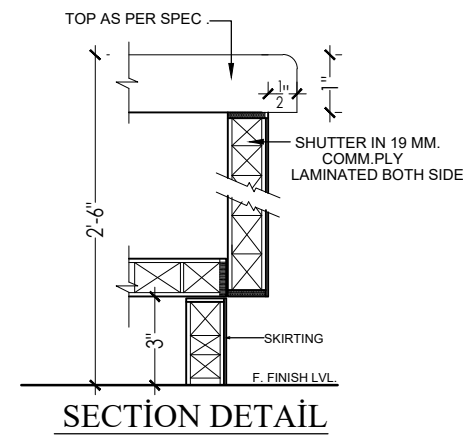
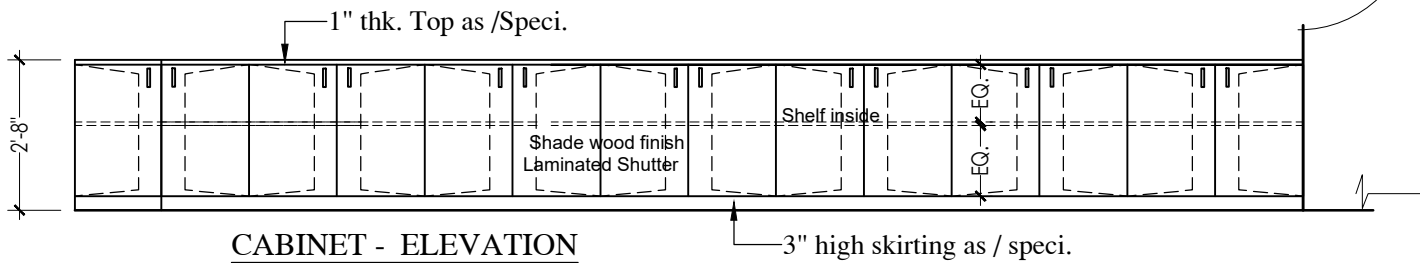
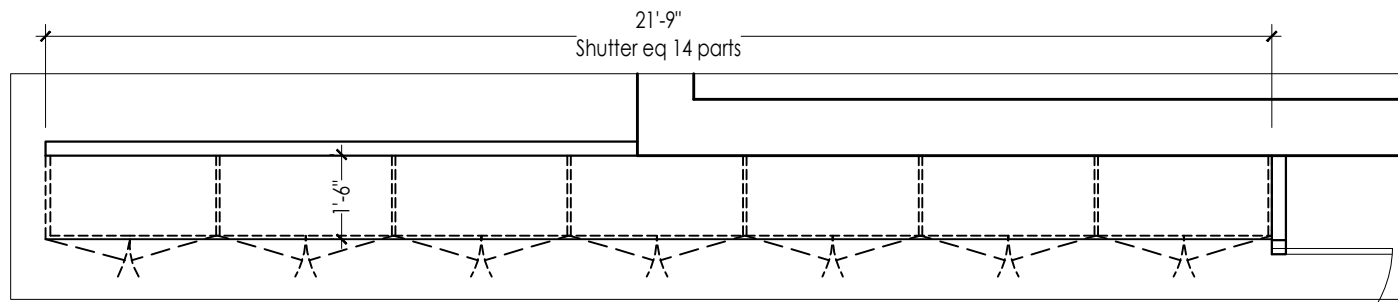
JOB No.:
 Bob/Nagl.

DRG.No.:
 TD-5

SCALE:-
 N.T.S.

ARCHITECTS :-
bdsharma CONSULTING pvt. ltd
 C-1/8, BASEMENT, S.D.A. ADJ. AUROBINDO
 MARKET NEW DELHI-110016
 PHONES:- 46029643, 26522528,
 email-bdsarchitect@gmail.com

NOTE: cabinets to have wood finish laminate at top and front



WORKING DRAWING

PROJECT:
BANK OF BARODA NAGLOI BRANCH
C1, YAADAV PARK, DELHI - 110041, PH.-011 25945132

TITLE:
CABINET DETAIL

DATE:-
DEC/24

JOB No.:
Bob/Nagl.

DRG.No.:
TD-6

SCALE:-
N.T.S.

ARCHITECTS :-
bdsharma CONSULTING pvt. ltd
C-1/8, BASEMENT, S.D.A. ADJ. AUROBINDO MARKET NEW DELHI-110016
PHONES:- 46029643, 26522528,
email-bdsarchitect@gmail.com