

NOTE:

- 1. THIS DRAWINGS IS THE PROPERTY OF THE ARCHITECT AND SHALL NOT BE COPIED WITHOUT HIS PERMISSION.
- 2. DISCREPANCIES FOUND IN THE DRAWING SHALL BE BROUGHT TO THE ARCHITECT'S NOTICE IMMEDIATELY.
- 3. DRAWINGS SHALL BE READ AND SHOULD NOT BE SCALED.

PROJECT :



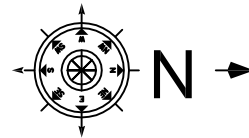
PROPOSED INTERIORs FOR
BANK OF BARODA
 PODALAKURU BRANCH
 NELLORE

INTERIOR LAYOUT PLAN
 GROUND FLOOR

DRG TITLE :

DESIGNED BY: FA
 DRAWN BY: MASTAN
 CHECKED BY : FA
 DATE : 18-03-2024
 SCALE : NTS

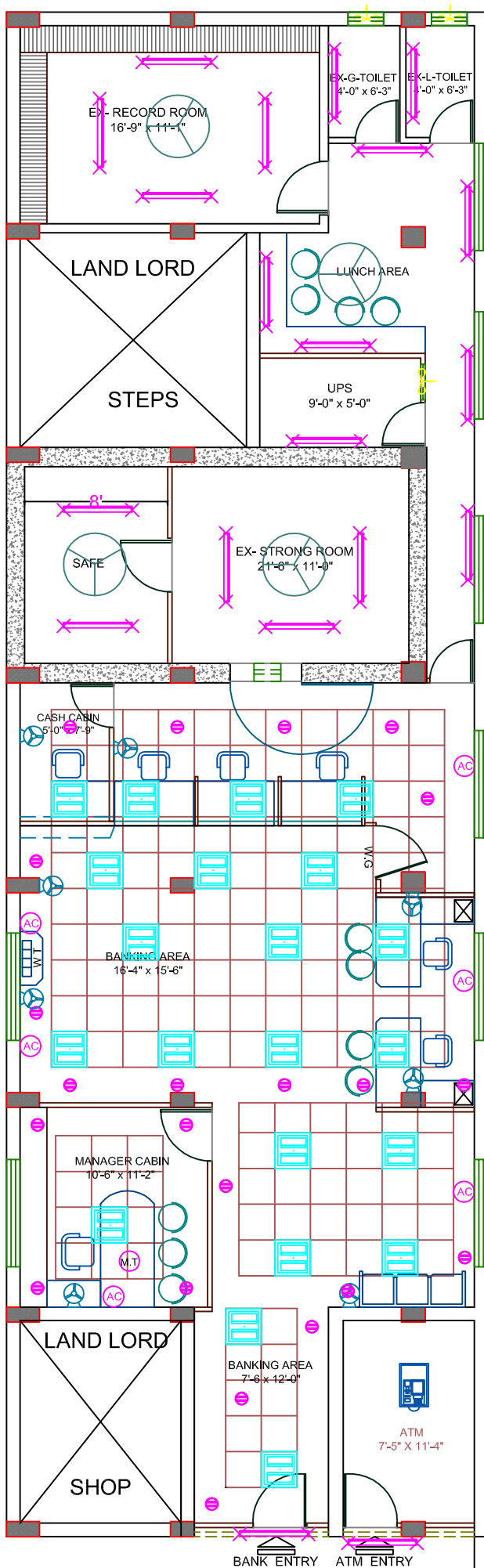
NORTH :



ARCHITECT:

FIROZ AHMED, M.Arch.,
 H.NO 13-6-436/A/33,
 LAKSHMI APARTMENTS,
 2nd FLOOR, 301, LAKSHMI NAGAR
 PILLAR NO.68, MEHIDIPATNAM,
 HYDERABAD-028.
 CELL: 98481 49737

OPTION - 02(c)



NOTE:

1. THIS DRAWINGS IS THE PROPERTY OF THE ARCHITECT AND SHALL NOT BE COPIED WITHOUT HIS PERMISSION.
2. DISCREPANCIES FOUND IN THE DRAWING SHALL BE BROUGHT TO THE ARCHITECT'S NOTICE IMMEDIATELY.
3. DRAWINGS SHALL BE READ AND SHOULD NOT BE SCALED.

PROJECT :



PROPOSED INTERIORs FOR
BANK OF BARODA
 PODALAKURU BRANCH
 NELLORE

ELECTRICAL LAYOUT PLAN
 GROUND FLOOR

DRG TITLE :

DESIGNED BY: FA
 DRAWN BY: A.Ahad
 CHECKED BY : FA
 DATE : 18-03-2024
 SCALE : NTS

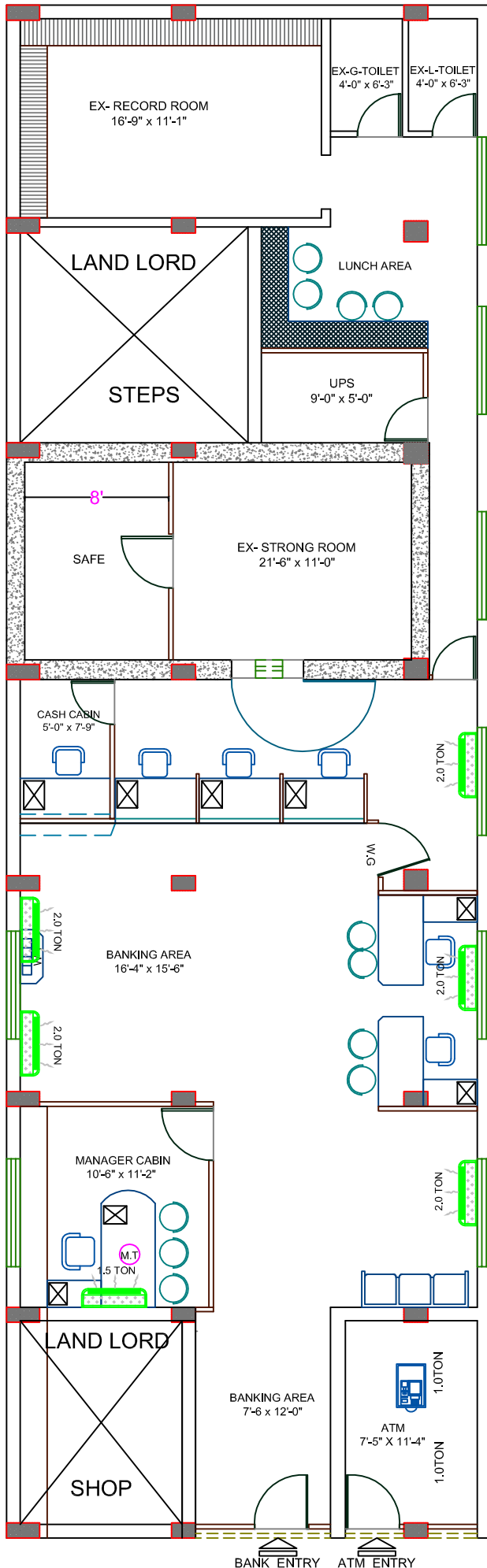
NORTH :



ARCHITECT:

FIROZ AHMED, M.Arch.,
 H.NO 13-6-436/A/33,
 LAKSHMI APARTMENTS,
 2nd FLOOR, 301, LAKSHMI NAGAR
 PILLAR NO.68, MEHIDIPATNAM,
 HYDERABAD-028.
 CELL: 98481 49737

OPTION - 02(c)



NOTE:

1. THIS DRAWINGS IS THE PROPERTY OF THE ARCHITECT AND SHALL NOT BE COPIED WITHOUT HIS PERMISSION.
2. DISCREPANCIES FOUND IN THE DRAWING SHALL BE BROUGHT TO THE ARCHITECT'S NOTICE IMMEDIATELY.
3. DRAWINGS SHALL BE READ AND SHOULD NOT BE SCALED.

PROJECT :



PROPOSED INTERIORs FOR
BANK OF BARODA
 PODALAKURU BRANCH
 NELLORE

INTERIOR LAYOUT PLAN
 GROUND FLOOR

DRG TITLE :

DESIGNED BY: FA
 DRAWN BY: MASTAN
 CHECKED BY : FA
 DATE : 18-03-2024
 SCALE : NTS

NORTH :



ARCHITECT:

FIROZ AHMED, M.Arch.,
 H.NO 13-6-436/A/33,
 LAKSHMI APARTMENTS,
 2nd FLOOR, 301, LAKSHMI NAGAR
 PILLAR NO.68, MEHIDIPATNAM,
 HYDERABAD-028.
 CELL: 98481 49737

OPTION - 02(c)

S.No.	Item	Item Code	Quantity	Unit	Rate (Rs.P)	Amount (Rs.P)
A	INTERIOR FURNISHING WORK:					
1	Providing and fixing main ENTRANCE DOOR (5'X7') and ENTRANCE PARTITION in beach wood framed glazed door frame of size 4"X3" beach wood glazed door shutter using 12mm thk Toughened Modi glass /approved make with Bank Logo of 9" dia engraved design border of 8mm thk and having 6"X1.65" (150mmX40mm) top & side rails, bottom with 8"X1.65" (200mmx40mm) of good quality beach wood & topped with decorative beach wood beading and finished the the same best melamine polish of desired shape & colour with all necessary accessories such as floor springs of dorma make, brushed SS handles (SU12PSS of dorset make of silver bronze finish) fixed to the doors inside & out side, Godrej Mortice lock of brass finish, etc. as directed by Bank / Architect. complete as shown in drawing. (Bank logo to be etched on glass as shown in the drg.)	MD	69.00	Sft		
2	Providing and fixing FULL HEIGHT PARTITION with GLASS in double skin of 9mm thk.BWR 303 grade ply with 1.0mm thk shell finish laminate on both sides fixed to natural melamine polished Beach wood bottom, middle and top rail of 3" x 2" and concealed Salwood verticals of 2" x 2" at not more than 4'-0" apart including fitting door frame where indicated with beach wood frame of 4" x 2" complete as shown in drawing. shall be of natural melamine polished beach wood, above 3'-0" with 6mm plain float glass with etching fixed to 2"x3" beach wood Vertical/ horizontals and 12mmx12mm BW beading, all in natural melamine mate polished, incl. fitting door frame where indicated with beach wood frame of 4" x 2" complete as shown in drawing. (Verticals to go upto the RCC roof for support, but measurement rate shall be made only upto the false ceiling only and shall not incl. the door shutter which is a seperate item).					
	As above with 6mm plain float glass with etching as per design..	FHP(G)	197.00	Sft		
3	Providing and fixing FULL HEIGHT PARTITION (Solid) in double skin of 9mm thk. BWR 303 grade ply with 1.0mm thk shell finish laminate on both sides fixed to natural melamine polished Beach wood bottom, middle and top rail of 3" x 2" and concealed Salwood verticals of 2" x 2" at not more than 4'-0" apart including fitting door frame where indicated with beach wood frame of 4" x 2", complete as shown in drawing. (Verticals to go upto the RCC roof for support, but measurement rate shall be made only upto the false ceiling only and shall not incl. the door shutter which is a seperate item).	FHP	99.00	Sft		
4	LOW HEIGHT with DOUBLE SKIN (4'-3" ht.),as per 2 above , with wood based Assam / Andaman teak wood / equivalent solid wood of 50mm x 50mm (2" x2") verticals @ 600mm to 900 mm (2'-0" to 3'-0") intervals spacing should not be more than 600mm (2'-0") intervals) with the skin on both sides made up of 9mm BWR ply wood finish with 1.0mm laminates up to 3'-0" ht & above that 14"ht 6mm thk etched glass fixed to 2"x3" beach wood Vertical/ horizontals and 12mmx12mm BW beading, all in natural melamine mate polished Complete as shown in drawing.	LHP	238.00	Sft		
5	Providing and fixing full height CASH COUNTER PARTITION (Front) as in 2 above but with 12mm thk plain float glass with hole cutting and grinding, corner verticals of natural melamine polished beach wood as per drawing and writing platform of 18mm thk black polished granite slab with edge rounding fixed on 18mm BWR 303 ply with 1.0 mm thk. shell finish laminate, complete as shown in the drawing. (Verticals to go upto the RCC roof for support, but measurement rate shall be made only upto the false ceiling only and shall not incl. the door shutter which is a seperate item).	CCP	109	Sft		

S.No.	Item	Item Code	Quantity	Unit	Rate (Rs.P)	Amount (Rs.P)
6	Providing and fixing MANAGER TABLE (6'-6"X 3'-0") as per shape shown in drawing, with side table and 2no.drawer unit in natural melamine polished TW frame of 3"x 1.5" with 18mm thick BWR 303 ply verticals and horizontals with 1.0mm thk shell finish laminate, 12mm thk plain glass on table top as per shape, with TW polished edge beading to all exposed edges of ply, incl. all approved accesories like drawer and keyboard sliders, locks, handles etc. with all internal surfaces of the table to be painted with two coats of synthetic enamel paint on plywood after one coat of primer, complete as shown in the drawing.	MT	1	No		
7	FRONT/ BACK OFFICER TABLES (5'-0"X 2'-6") with side table :Officer counter table (curve / stright) of 5'-0" length as per shape shown in drawing, made out of 18 mm 303I ply with edges fixed with 12mm teak wooden lipping, having clerical table top 2'-6" from the ground level & 2'-9" clear top width, with 18mm thk. commercial ply with 1mm thk. laminate, as per shape and size, Each unit shall be provided with a sliding key board tray 2'-3" of wide with sliders, cupboard below the drawer with locking arrangements aluminum handle, brass hinges etc the front back & top surface shall be laminated with 1.0mm thick approved laminate.The internal surface shall be painted with to coats of enamel paint (VANILLACREAM, CODE -3229) of Asian paints, over a coat of primer. Provision for c.p.u stand 1'-0" x2'-0" & footrest of size75mmx 38mm shall be made at the bottom. Wire manager shall be provided at the corner of the counter top. All exposed edges of the block shall be provided with teak wooden beading (3"x1"front side and 1"x 3/4" inner side) and polishing done etc. complete as shown in drawing.	OT	2	Nos.		
8	Providing and fixing CLERICAL's TABLE (5'/4'-6"X 2'-6") with out side table but with a Drawer unit position as per shape shown in drawing, in 18mm thick BWP 303 ply verticals and horizontals with 1.0 mm thk shell finish laminate with TW edge beading incl all accessories like sliders, locks, handles etc.,all internal surfaces of the table to be painted with two coats of synthetic enamel paint on lappam finished plywood after one coat of primer 0.8mm thick, complete as per drawing.	OT	3	Nos.		
9	Providing and fixing CASH TABLE (5'-0"X3'-0") , with a Drawer unit Keyboard to be fixed for every cabin, in 18mm thk. marine comercial 303ply horizontals and verticals, front edges of ply to be 2" x 1" thk. TW frame on the outside, polished (1"x 3/4") teak wood moulding / beading to all exposed edges of ply, all internal exposed surfaces of the table to be painted with two coats of synthetic enamel paint on plywood after one coat of primar 0.8mm thick, complete as shown in drawing, Complete as shown in drawing.	CT	1	Nos		
10	Front RUNING GLASS FRONT above front counter tables (1'-3" ht.) of 12mm thk glass with edge rounding and this is fixed to the 3"dia TW pillars / side partition with coping on the top at the every edge of the table. complete as shown in drawing.	RGF	15.00	Rft		
11	Providing and fixing SUB STAFF / Printer Table / Cash Counting / Lunch platform.. in 18mm thick BWR ply with 1.0mm thk shell finish laminate on top fixed to 3" x 1.5" TW frame work with intermediate TW members of 2" x 1.5" spaced not more than 3'-0" apart, complete as shown in the drawing. All exposed ply and wood surfaces to be painted with two coats of synthetic enamel paint after one coat of primer. (Measurement will be made as per surface area of table)	ST	35.00	Sft		

S.No.	Item	Item Code	Quantity	Unit	Rate (Rs.P)	Amount (Rs.P)
12	Providing and fixing GENERAL CUPBOARDS in 18mm thk BWP ply verticals and horizontals with 18mm thk BWP ply shelves with battened shutter in 12mm thk BWP ply with 1.0mm thk shell finish laminate on all external exposed surfaces with shutters fixed with auto closing hinges at not more than 2'-0" apart inclusive all approved accessories like handles, cupboard locks, tower bolts etc., complete as shown in the drawing. All internal exposed ply surfaces to be painted with two coats of synthetic enamel paint on lappam finished plywood after one coat of primer and all exposed edges of ply to be fixed with TW beading. (Measurement will be made on elevation area of cupboard irrespective of depth)	GC	219.00	Sft		
13	FALSE CEILING (As per Design) :Provided & fixing with Indian gypsum or equivalent suspended false ceiling (in any shape as shown in drawing) which includes providing and fixing G.I perimeter channels of 0.55mm thk having one flange of 20mm & another flange of 30mm & a web of 27mm along the perimeter of the ceiling, screw fixed to the brick wall with the help of nylon sleeves & screws, at 610 mm centers. as per manufacturers spec.s, taping of joints and finishing. finally the board are to be jointed and finished so as have a flush lock which includes filling & finishing tapered square edges of the boards with jointing compound, paper tape and & two coats of primer suitable for gypboard & 2 coats of emulsion paint with putty after appropriate surface preparation, of approved shade and colour by the bank / consultant. complete as shown in drawing.	FS	514.00	Sft		
13a	FALSE CEILING (GRID) : The grid false ceiling shall be provided in the Banking Hall, Manager's etc. Refer drwgs. No. 1-4-8. the ceiling height and level shall be provided at the perimeter. The minimum height of the ceiling cavity should be 100mm. All service fittings integrated within the suspended ceiling must be independently supported from the ceiling grid by a structure designed for the purpose. Ceiling tiles: shall be armstrong fine figured classic lite RH99 of 16mm thickness. Suspension system: shall be of armstrong trulok silhouette reveal profile grid system with 15mm flanges incorporating 3mm central recess in global white with black reveal. silhouette main runners and cross tees to have mitred ends and "birdsmouth" notches to provide mitred cruciform junctions.	GD	648.00	Sft		
14	Providing and fixing WRITING TABLE in 18mm thick BWR 303 ply verticals and horizontals with 1.0mm thk shell finish laminate towards exposed side, with 6mm thk plain glass for partition complete as shown in the drawing. All exposed ply surfaces to be painted with two coats of synthetic enamel paint on plywood after one coat of primer.	WT	1.00	Nos.		
15	Providing and fixing DRAWER UNIT (1'-2"X1'-6"X2'-6"ht.) in 18mm thick BWR 303ply, for drawers verticals and horizontals with 1.0mm thk shell finish laminate on all visable outer surfaces with drawer slides incl. all accssories such as handles, auto closing hinges, single key locking system for drawers, complete as shown in the drawing. All exposed ply surfaces to be painted with two coats of synthetic enamel paint on plywood after one coat of primer.	DU	0.00	Nos.		
16	Providing and fixing CHECK DROP/ SUGGESION BOX (1'-2"X1'-2"X1'-6"ht.) in 18mm thick 303 ply, for verticals and horizontals with 1.0mm thk shell finish laminate on all visable outer surfaces with drawer slides incl. all accssories such as handles, auto closing hinges, single key locking system for drawers, complete as shown in the drawing. All exposed ply surfaces to be painted with two coats of synthetic enamel paint on plywood after one coat of primer.	CB	1.00	Nos.		

S.No.	Item	Item Code	Quantity	Unit	Rate (Rs.P)	Amount (Rs.P)
17	Providing and fixing water proof solid core FLUSH DOORS shutters 35mm thk (TW wood beading of 0.5" x 1.25" to be provided all around) of approved make as per ISI specifications and 1mm thk shell finish laminate on both sides with vision hole cutting with 6mm thk plain glass as indicated. The shutter shall be fixed to existing partition frame work, necessary hardware fittings like brass butt hinges, door closers, mortice locks, tower bolts, handles etc. of approved make, including all incidental and operational charges etc., complete.	FD	135.00	Sft		
18	Providing and fixing 12 mm th. SOFT BOARD on 12mm th. BWR 303 ply with cloth covering of not less than Rs.250/- per metre, complete incl. painting the rear surface of ply with two coats of synthetic enamel paint and providing TW beading all around.	SB	16.00	Sft		
19	Providing and fixing WALL PANELLING in any shape to columns and walls where indicated with 8mm thk BWR 303 ply fixed to 1" x 2" salwood verticals and horizontals spaced not more than 2'-0" apart in both directions with 1mm thk shell finish laminate upto a height of 3'-6" / up to ceiling, complete as shown in the drawing.	WP	528.00	Sft		
20	VERTICAL VENETION BLINDS: Providing and fixing 100mm wide vertical blinds of mac make of approved range with louver made of polyester base fabric and providing with guardian tilter wand cord accessories like head channel, end control unit, tilt rod, tilter chain, carrier, space, bottom mechansm, cord, cord weight, instslation, etc; of approved colour and texture. complete as per Bank / Architect direction.	VB	240.00	Sft		
21	Painting to walls & ceiling with lappam in two coats of Acrylic emulsion paint after appropriate surface preparation of one coat of primer.	PWL	1820.00	Sft		
22	Painting to walls and ceiling with out lappam in two coats of Acrylic emulsion paint after appropriate surface preparation of primer.	PWOL	1800.00	Sft		
23	Painting to Window/ Ventilator/ Shutter in two coats of synthatic enamil paint after appropriate surface preparation of one coat of primer.	SP	150.00	Sft		
24	Providing and fixing covering to rolling shutter and shutters for covering electrical panel board, etc., with 18mm BWR 303 ply with 1mm thick shell finish laminate of approved shade and make including painting of inside with primer and two coats of synthetic enamel paint, and providing teak wood beading to all exposed edges including all accessories hinges, handles, ballcatches, etc., complete.	CRS	45.00	Sft		
25	Providing and fixing ACP wall / ceiling cladding complete as shown in the drawing.		300.00	Sft		
*	Total Amount For Branch interior works (A) :					
	GST 18% Extra					
**	Rupees					

PROPOSED ELECTRICAL WORKS FOR BANK OF BARODA PODAKALURU
 BRANCH. Detail B-O-Q For BRANCH
 Electrical Works

S.NO	DESCRIPTION	UNIT	QTY	Rate (Rs)	Amount(Rs)
	INTERNAL ELECTRICAL WORKS				
E - 1	Lights Points(Including Circuit Wiring 2x2.5+1.5 Sqmm)				
	Point Wiring for Light/ Fan/ Exhaust fan with 2runs of 650V grade 1.5 Sq.mm FRLS PVC & 1 run of 1.5 Sq.mm PVC insulated Copper wires , run in 25 mm dia heavy gauge PVC conduits concealed in wall / ceiling conforming to IS including all accessories such as junction boxes, conduit bends elbows and ceiling rose, anodised GI Switch box with modular switch and the box covered with front plate.(Point Wiring Include Circuit Wiring From Main Db to SWitch Board with 2x2.5 +1.5 Sqmm Copper fluxible wire etc)				
a	One Light point controlled by one 6A switch.	Nos	34		
b	Two Lights point controlled by one 6A switch.	Nos	14		
c	Exhaust fan point controlled by one switch.	Nos	4		
d	Ceiling fan point controlled by one switch & Electronic Step type Regulator and Concealed MS fan hook box.	Nos	4		
e	Supply and fixing of 6A, 3Pin Socket outlet switches of 6A rating boards for Wall Mounting Fans and (Dependant).	Nos			
i	Independent points	Nos	8		
ii	Dependent points	Nos	8		
d	Inverter points	Nos	14		
E - 2	Supply and Wiring with the following size 650V grade FR PVC insulated Copper conductor wires in suitable PVC conduit including end terminations with suitable lugs.				
	a)Supply and wiring of UPS Points wiring from UPS Room DB to Individual Work Stations With required all Connections and Suitable PVC Conduites. 2runs of 2.5Sq.mm PVC wires with 1run of 1.5 Sq.mm PVC Conduite for UPS out going Wirings	Rmt	162		
	b) 2runs of 4Sq.mm PVC wires with 1run of 2.5 Sq.mm PVC Conduite	Rmt	194		
	c) 2 runs of 6 Sq.mm PVC wires with 1 run of 4 Sq.mm PVC insulated Copper earth wire in PVC in conduit. For A/C Sockets	Rmt	86		
	d) 4 runs of 4 Sq.mm PVC wires with 2 runs of 4Sq.mm PVC insulated Copper earth wire in PVC conduit.	Rmt	146		
	e) 2runs of 4.0 Sq.mm PVC wires with 1run of 1.5 Sq.mm PVC wire for Name board from the 10 A DP MCB on the main board	LS	1		
E - 3	Light / Fan Fixtures				

PROPOSED ELECTRICAL WORKS FOR BANK OF BARODA PODAKALURU
 BRANCH. Detail B-O-Q For BRANCH
 Electrical Works

S.NO	DESCRIPTION	UNIT	QTY	Rate (Rs)	Amount(Rs)
	Supply and Installation of following type Fluorescent/ Compact fluorescent/ Incandescent light fixtures on wall/ Ceiling including all fixing accessories such as leads, Teak wood round block etc complete as required. The Fluorescent/CFL fixtures shall be complete with Low loss copper ballast PF improvement capacitor, Bipin Rotor type lamp holder, starter, starter base, all prewired upto the terminal block. All fixtures shall be supplied with lamps. The Catalogue Numbers refers to Philips Make or equivalent approved make .				
	a) Recess mounted LED Luminaire 36 x 1W Class LED, Wipro make code: LM - 036 - XXX - WH - XX.				
	Supply	Nos	15		
	Erection	Nos	15		
	Frame	Nos			
	b) Recess mounted LED Down lighter with Pressure die cast aluminium housing (10 x 1W), Wipro make code: LD 49 - 900 - XXX - 60 - XX.				
	Supply	Nos	20		
	Erection	Nos	20		
	c) 20W LED Tube light fixture Wall/ Ceiling mounted (Philips Make TMS 200/140)				
	Supply	Nos	16		
	Erection	Nos	16		
E - 4	Ceiling Fans				
	Supply & Fixing of 1200 mm sweep Crompton Make High Speed Ceiling fan with standard down rod, all accessories Electrical connections. Including fixing materials required.				
	Supply	Nos	4		
	Erection	Nos	4		
E - 5	Wall Mounted Fans				
	Supply & Fixing of 400 mm sweep Wall mounted fan with normal body and plate of 3 pin Plug on the lead wire of each fan all accessories Electrical connections. Including fixing materials required.				
	Supply	Nos	5		
	Erection	Nos	5		
E - 6	Exhaust Fans				
	Supply and Installation of heavy duty Exhaust fans with Metallic blades following size sweep with gravity louvres shutters Exhaust fans with Metallic blades of following				
	a) 300mm Sweep (Crompton make Tracent Model)				
	Supply	Nos	3		
	Erection	Nos	3		
E - 7	MAIN DBS / SUB DBS				

PROPOSED ELECTRICAL WORKS FOR BANK OF BARODA PODAKALURU
 BRANCH. Detail B-O-Q For BRANCH
 Electrical Works

S.NO	DESCRIPTION	UNIT	QTY	Rate (Rs)	Amount(Rs)
	Supply Installation Testing and commissioning of TPN MCB Double door Distribution boards dust and vermin protected and rated for 415V, Three Phase AC supply operation including incoming MCB/ELCB as per specifications and required capacity Neutral bar and Earth terminal complete as required and installed in flush with wall including all fixing materials required. MCBs shall conform : 8828 and ELCB /RCCB shall confirm to IS : 12640				
	a)Supply, installation, testing and commissioning of (Double door) with 8Way VTPN MCCB DPX DB with 125A 4Pole MCCB as incomer and 63A TPMCbs -2 Nos, 32A TP MCbs-2 Nos, and 12 nos10/32A SPMCBs s outgoing. (for MAIN DB)	Nos	1		
	b)Supply, installation, testing and commissioning of (Double door) with 4Way TPN MCB DB with 63A 4Pole MCB as incomer and 12 nos10A SPMCBs s outgoing. (for LDB)	Nos	2		
	c)Supply, installation, testing and commissioning of 8way SPN MCB DB (Double door) with 32A DP MCB as incomer and 6nos. 6A/10A/16A SPMCBs as outgoing.(UPS DB)	Nos.	2		
	d)Supply and fixing of 32 A, DP MCB-1No. with encloser for UPS Incoming.	Nos	3		
	f) Master Control DB: Supply & fabrication of free standing wall mounted M V panel made out of 14SWG MS sheet after seven tank process and painting with epoxy powder coating with vertical cubicles as detailed below. CUBICLE-1: 100A,4P,25KA MCCB with vary deep extendable handle -1 no CUBICLE-2: 63A, 4P MCBs-2 Nos (Branch UPS, Sign Board and ATM) with vary deep extendable handle-1no. Note : 2 No of MCBs Connections directly from MCCB Input and Panel Install Main Entrance.	Nos	1		
E - 8	Raw power Wiring and Sockets: Supply and wiring of Raw Power Points from Main DB to Individual Work Stations With required all Connections with 2runs of 2.5Sq.mm PVC wires with 1run of 1.5 Sq.mm PVC Conduite for UPS out going Wirings and also SA supply and fixing of 1 Nos 6A sockets with 1 Nos 6A switch of modular type with 'front plate and anodised GI box complete 'as required'.for UPS Sockets	Nos	9		
E -9	Supply and fixing of 1no 16A 3pin 'socketswith 16A switch of modular type with 'front plate and anodised GI box complete 'as required'.(Raw Power)	Nos	2		

PROPOSED ELECTRICAL WORKS FOR BANK OF BARODA PODAKALURU
 BRANCH. Detail B-O-Q For BRANCH
 Electrical Works

S.NO	DESCRIPTION	UNIT	QTY	Rate (Rs)	Amount(Rs)
E - 10	UPS Wiring and Sockets: Supply and wiring of UPS Points from UPS Room DB to Individual Work Stations With required all Connections with 2runs of 2.5Sq.mm PVC wires with 1run of 1.5 Sq.mm PVC Conduite for UPS out going Wirings and also SA Supply and fixing of 3 Nos 6A sockets with 2 Nos 6A switch of modular type with 'front plate and anodised GI box complete 'as required'.for UPS Sockets. (UPS -1 conection table / counter no.1,3,5 & 7 and UPS -2 table no. 2,4,6 & 8 etc, and network rack & manager 2 UPS points from UPS-1 & UPS-2.	Nos	10		
E - 11	Supply and fixing of 3 Nos 16A sockets with 1 Nos 16A switch of modular type with 'front plate and anodised GI box complete 'as required'.for UPS Sockets	Nos	2		
E - 12	Supply installation testing and commissioning of AC Units With 2x4Sqmm+2.5Sqmm Copper Fluxible Wire From Main DB to AC Units including Legrand Make 20A Metal Clad Socket with 25/32A SP MCB set(Like Metal Clad Socket+Wiring From Db to AC Box to Stabilizer to AC Units)	No	6		
E - 13	Supply and erecting of approved make telephone RJ 11Jack for telephone with 2 pair .5mm Thick Telephone cable including pvc conduite with required all materials (RJ-11 Jack+ 2 pair Cable)	Nos	3		
E - 14	Supply and Laying of 10 pair .5mm Thick Telephone cable including pvc conduite with required all materials From Outside to Rack locations	Nos	1		
E - 15	Supply and fixing of 10pair Crone Connector box with 10 Pair connectors and required all connections.	Nos	1		
E - 16	MV Cables Supply, laying and commissioning of following size 1.1KVgrade PVC insulated armoured aluminium conductor underground cable, in built up cable trench/ 2" PVC pipe or on cable tray with all installation materials.When the cable is to be laid in ground, the same shall be laid at a depth of 750mm below ground level including excavation and refilling of earth after cables are laid,providing protection with sand and bricks at sides and top and cable route markers at 'every 15mtr. interval and also atthe turnings. The cable shall conform to IS 1554/ Part I.Cable protected in 2" Dia G.I Pipe10' long at the pole (correct measurement should be taken by the contractor before procuring the cable.				
	a) 3.5C X 50 Sq.mm	Rmt	112		
	b) 4C X16 Sq.mm	Rmt	88		
E-17	Providing Indoor ordinary end terminations for the cable specified above with compression type steel gland, Bi-metallic lugs using crimping tool,Insulation tape,Identification tags etc., including end termination and Earthing of Gland with 8SWG 'GI Wire				
	a) 3.5C X 50 Sq.mm	No	2		
	b) 4C X 16 Sq.mm	No	4		

PROPOSED ELECTRICAL WORKS FOR BANK OF BARODA PODAKALURU
 BRANCH. Detail B-O-Q For BRANCH
 Electrical Works

S.NO	DESCRIPTION	UNIT	QTY	Rate (Rs)	Amount(Rs)
E -18	Earthing				
	a) Providing G.I. Earth station, with 40mm dia 2500mm long GI pipe including construction of brick pedestal, providing meshed funnel, CI cover and other civil Engineering works, spreading a homogenous mixture of salt, charcoal around the pipe etc, completely as per IS 3043, 1987 or latest revision.	No	1		
	b) Providing Copper Earth station, with 600X600X3.15mm Copper plate at 2500mm depth including construction of brick pedestal, providing meshed funnel, CI cover and other civil Engineering works, spreading a homogenous mixture of salt, charcoal around the pipe etc, completely as per IS3043, 1987 or latest revision.	No	1		
	c) Supply and laying of following size strips including including all necessary inter connections with earth station and equipments.				
	i) 8 SWG Copper wire	Rmt	76		
19	LAN Cable				
a	Supply and Laying of 4Pair CAT-6E LAN Cable with suitable PVC Conduite and Junction boxes with etc.	Pts	16		
b	Supply and fixing of CAT-6E Information out lets Systimax/ Amps/ D Link	Set	16		
c	Supply of Patch Cards 3' (Factory Crimping)	Set	16		
d	Supply of Patch Cards 7' (Factory Crimping)	Set	16		
e	Supply and fixing of 24 port Jack panel (Systimax/ amp)	Set	1		
f	Supply and fixing of 9U Rack encloser with accries like Self Power manager, Cable Manager, Hard Ware etc.	Set	1		
g	Supply and fixing of 24 ports d-link switch	Set	1		
20	Supply & Installation of rubber mats of 2000 mm x 600mm & thickness of 10mm				
a	1.1 KV Voltage grade.	No's	2		

TOTAL AMOUNT FOR BRANCH ELECTRICAL WORKS Rs (A) :					
B	(A T M) -DETAIL FOR ELECTRICAL WORKS				
E-1	Supply and Wiring with the following size 650V grade FR PVC insulated Copper conductor wires in suitable PVC conduit including end terminations with suitable lugs.				
	a) 4 runs of 4 Sq.mm PVC wires with 2 runs of 4Sq.mm PVC insulated Copper earth wire in PVC conduit, for ATM input.	Rmt	102		

PROPOSED ELECTRICAL WORKS FOR BANK OF BARODA PODAKALURU
 BRANCH. Detail B-O-Q For BRANCH
 Electrical Works

S.NO	DESCRIPTION	UNIT	QTY	Rate (Rs)	Amount(Rs)
E-2	LAN Cable				
a	Supply and Laying of 4Pair CAT-6E LAN Cable with suitable PVC Conduite and Junction boxes with etc.	Pts	2		
B	Total Amount for ATM Electrical works (B):		=		
**	GRAND TOTAL for Branch & ATM Electrical works (A+B):		=		
	Rupees				
	GST EXTRA @ 18%				

S.No.	Item	Item Code	Qty.	Unit	Rate in Rs.	Amount (Rs.P)
C	AIR- CONDITION WORKS:					
1.00	Supply,installation, testing & commissioning of the following Cordless Hi-wall with min <u>3 star</u> rated Split Air conditioners fitted Reciprocating / Rotary compressors, including copper pipping / drain pipping etc.					
a	2.0 TR with 5.0 KVA Stabiliser		5.00	Nos		
b	1.5 TR with 5.0 KVA Stabiliser (BM)		1.00	Nos		
c	1.0 TR with 4.0 KVA Stabiliser		0.00	Nos		
2.00	Supply, installation, testing & commissioning of the following Soft drawn copper piping with 9 mm thick Nitrile rubber, Wiring between indoor / out door unit, insulation including all necessary fittings between indoor and out door air cooled condensers of the following sizes & Along With Main Pipe.					
a	25 mm Dia (Mention correct Size Suitable for AC Unit)		35.00	Rmt		
3.00	Supply, fixing, testing & commissioning of the Condenser supports .					
	a). Split AC Unit		6.00	No.		
4.00	Minor Civil works (chipping for drain pipe, drain pipe replastering for the same)		6.00	No.		
TOTAL Amount for (Air-conditioning works) C:						
Rupees						
GST EXTRA						
Approved Makes :						
1	Split Units : Carrier / Voltas / Daikin.					
2	PVC Pipe : Sudhakar / Ashirwad					